

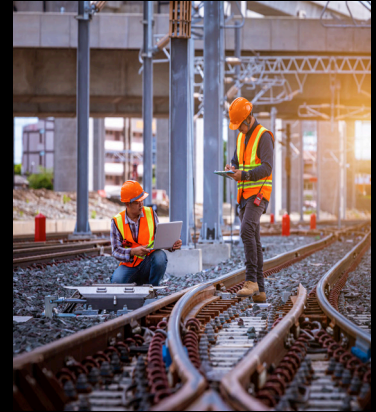
Rail and Infrastructure

Keeping You on Track

As the demand for travel increases, so does the need for safe, reliable, sustainable rail solutions with minimal environmental impact. Our work with TFL, UK Rail and HS2 has shown a clear change in the need for reformed carbon neutral transportation methods.

Shawston stock a range of products from key manufacturers, suitable for use in the lifecycle of rail transportation. We guarantee full product traceability, faster and greener deliveries via our own vehicle fleet.

And with nationwide branch locations, each delivery is sent from the closest location the next working day, allowing greater efficiencies across the board.



Improving Mobility Together.



Full Product Traceability

Helping to manage your projects with minimal disruption, we guarantee our products from beginning to end. Ensuring continuity and sustainability of supply.



Keeping Rail and Infrastructure Safe

Our robust supply chain means we can effectively manage our stock levels from end to end. Optimising deliveries and improving efficiencies is key and form the basis of our unrivalled customer service commitment.

Product Ranges

- Steel Tube
- Victaulic
- Valves
- Pipe Supports and Bracketry
- Thermal Expansion and Antivibration

For all enquiries please contact our team on email: londonfire@shawston.co.uk

