

# Rapidrop Flexible Sprinkler Connections



**Keeping the art of distribution simple**

## Rapidrop Flexible Sprinkler Connections

Shawston are a stockist and distributor of Flexible Hose and associated installation accessories. We carry in depth stocks at all of our branches for next day deliveries nationally.

Rapidrop® is a complete unit, a corrugated stainless steel flexible with nipple, reducer, bar and brackets, which are fitted to the ceiling tile support rails to locate and secure the sprinkler in the correct position. As well as considerably reduced installation time, the risk of mess (from the cutting and threading activity associated with the traditional armoover method) in the clean area below the suspended ceiling is eliminated, allowing other activities to proceed more efficiently.

The unique Rapidrop® system easily positions the sprinkler in the centre of the ceiling tile at the correct height and can be installed in 10 to 15 minutes. The concept is very simple and breathtakingly efficient.

### Flexible Hoses

Page 3



### Support Bar

Page 4



### Support Brackets

Pages 5 - 6



### Inlets & Outlets

Pages 7

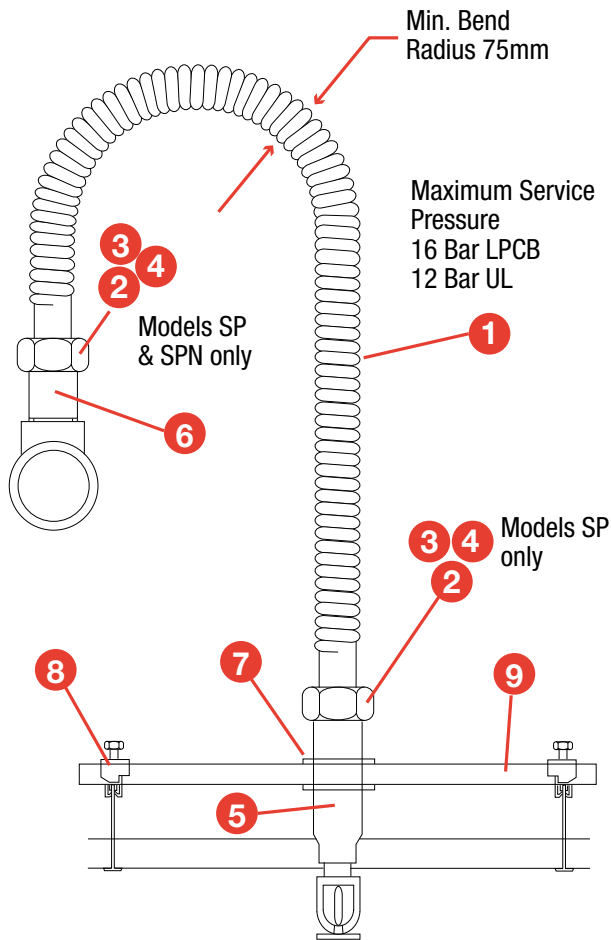


### Assessories

Page 8



## Flexible Hoses



### Benefits

- Save Time
- No Cutting
- No Welding
- Save Labour
- No Threading
- No Mess - Clean
- Save Money
- No oil
- Ideal for Retrofit Applications
- No Measuring
- No Grease
- Easy to move for layout changes

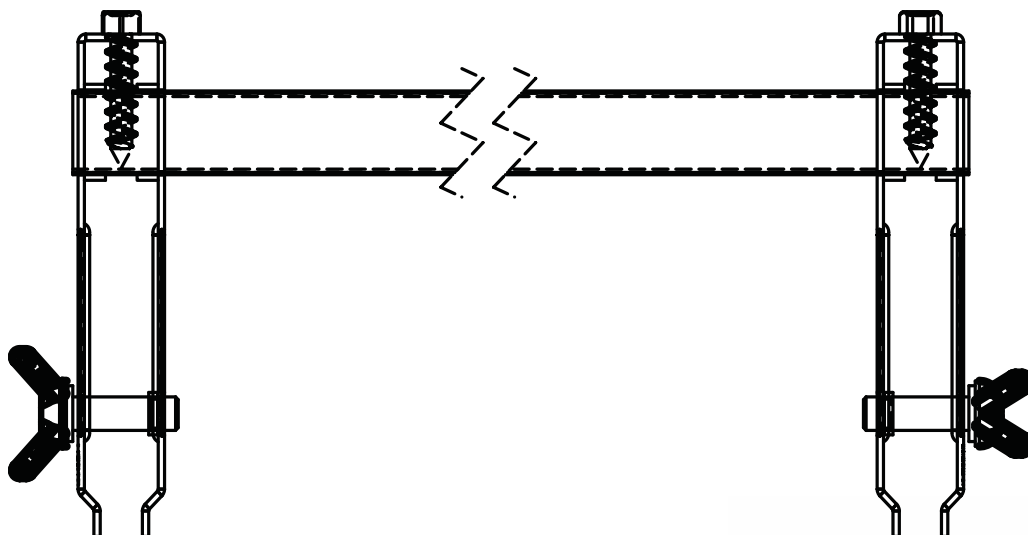
### Material Specification

Ref		MODEL SP	
No.	Description	Qty	Material
1	Flexible	1	AISI 304
2	Nut	2	SS400 Zinc Plated
3	Isolation ring	2	Nylon 66
4	Packaging (Seal)	2	NBR
5	Reducer	1	Carbon Steel Zinc Plated
6	Nipple	1	Carbon Steel Zinc Plated
7	Bracket A	1	Mild Steel Zinc Plated
8	Bracket B	2	Mild Steel Zinc Plated
9	Square Bar	1	Mild Steel Zinc Plated

CODE	DESCRIPTION
RD0780	780mm Long Rapidrop
RD1000	1000 mm Long Rapidrop
RD1220	1220mm Long Rapidrop
RD1540	1540mm Long Rapidrop
RD1880	1880mm Long Rapidrop
RD2540	2540mm Long Rapidrop

## Support Bar

### Bracket Assembly



### Material Specification

Square Bar made from mild steel, zinc plated.



CODE	DESCRIPTION
RDSB0640	Rapidrop Support Bar 640mm Long
RDSB0800	Rapidrop Support Bar 800mm Long
RDSB1000	Rapidrop Support Bar 1000mm Long
RDSB1600	Rapidrop Support Bar 1600mm Long

## Support Brackets



	B1	B11	B7	B900
A mm	38	60	99	107
B mm	20	30	30	30

	A2
A mm	65
B mm	50

CODE	DESCRIPTION
RDB01	B01 Bracket - Pendant Head - Plasterboard
RDB11	B11 Bracket - Pendant Head - Ceiling Tile
RDB07	B07 Bracket - Concealed Head - Ceiling Tile
RDB900	B900 Bracket - Concealed Head - Plasterboard

CODE	DESCRIPTION
RDBA	Type A Drop Bracket

## Inlets and Outlets



	INLET OPTIONS		OUTLET OPTIONS		OUTLET ELBOWS
A mm	R1 (1" BSPT)* or 1" NPT		Rc 1/2 (1/2" BSPT) 1/2" NPT* or Rc 3/4 (3/4" BSPT) 3/4" NPT		Rc 1/2 (1/2" BSPT) 1/2" NPT* or Rc 3/4 (3/4" BSPT) 3/4" NPT
B mm	50		110		110
C mm	-		-		65

CODE	DESCRIPTION
RDN25X25	25X25 Inlet Nipple
RDN32X25	32X25 Inlet Nipple
RDRED15STD	1/2" x M33 Outlet Reducer
RDRED15EXT	1/2" x M33 Extended Outlet Reducer
RDA2AELBOW	1/2" Reducing Outlet Elbow

## Accessories

### Minimum Radius Indicator



CODE	DESCRIPTION
RDMRI	Minimum Radius Indicator

### Adaptor



CODE	DESCRIPTION
ADAPT15	1/2" Female Iron x 1/2" Male Iron Brass Tap Ext Adaptor
ADAPTOR20	3/4" Female Iron x 3/4" Male Iron Brass Tap Ext Adaptor

# www.shawston.co.uk

---

Shawston London  
Units G & H,  
Hillbottom Road,  
Sands Industrial Estate,  
High Wycombe,  
Bucks HP12 4HS

Tel: 01494 460 910  
Fax: 01494 522 573  
Email: [London@shawston.co.uk](mailto:London@shawston.co.uk)

Shawston Birmingham  
Bay 1, Block D,  
The Bescot Estate,  
Woden Road West, Wednesbury  
West Midlands WS10 7SG

Tel: 0121 556 3400  
Fax: 0121 506 4669  
Email: [Birmingham@shawston.co.uk](mailto:Birmingham@shawston.co.uk)

Shawston Manchester  
Great Norbury Street,  
Hyde,  
Cheshire SK14 1BW

Tel: 0161 368 4545  
Fax: 0161 367 8114  
Email: [Manchester@shawston.co.uk](mailto:Manchester@shawston.co.uk)

Shawston Glasgow  
Block 1 Unit 4,  
Annick Industrial Estate,  
31 Sandilands Street,  
Shettleston,  
Glasgow G32 OHT

Tel: 0141 778 6975  
Fax: 0141 778 6264  
Email: [Glasgow@shawston.co.uk](mailto:Glasgow@shawston.co.uk)

---