

Pipe Supports & Bracketry



Keeping the art of distribution simple

Pre-Assembly Services

Leading the way in pre-assembled pipe support systems

Shawston supply an innovative range of pre-assembled pipe support services and bracketry specifically designed to provide contractors with their ongoing project requirements.

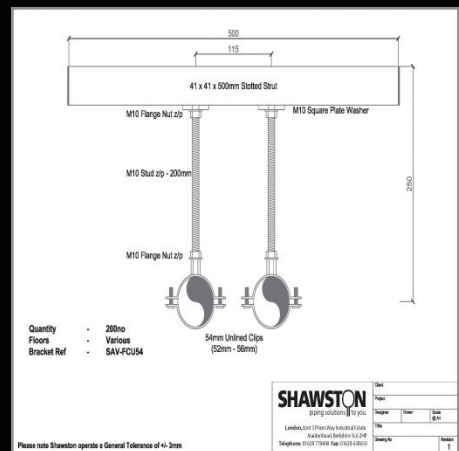
All Shawston pre-assembled products offer a multitude of benefits that will save you time and money including:

- Next day delivery via our own vehicle fleet.
- Quality checked products.
- All brackets are labelled to your specifications.
- Bracket identification is synchronised to ensure block labels match pipe clips.
- PDF assembly drawings are delivered with each design and supplied in full at completion.
- Significant labour savings compared to your on-site labour costs.
- Pre-assembled pipe support systems minimise time wastage on-site.
- Prompt, efficient, on-demand deliveries reduce on-site storage requirements.
- Pre-assembled brackets reduce material wastage and risk of theft.

BESPOKE DESIGN SERVICE

- Our bespoke pre-assembly design service can identify and plan the entire pipe support system required for a particular project, based solely on drawings supplied by the contractor.

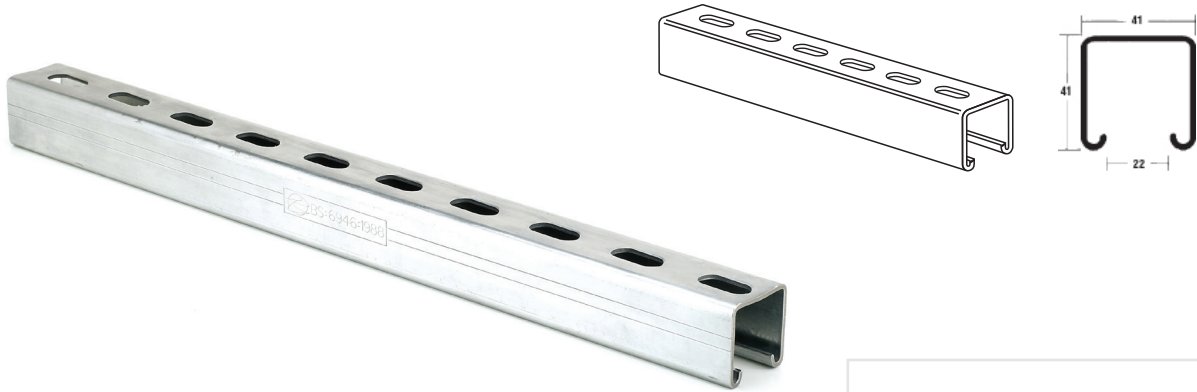
- P04** Pre-assembly Service
- P05** Channels
- P10** Threaded Rod & Suspension Hangers
- P13** Channel Brackets
- P21** Fire Protection Brackets & Equipment
- P24** Pipe Supports
- P33** Fasteners
- P39** Insulating Blocks
- P45** Lindapter
- P57** Terms and Conditions



Channels

CHS4141

41 x 41 Slotted Channel



Sizes
1m
2m
3m
4m
6m
Cut to length

2.5mm & 1.5mm gauges
 Pre-cut specific lengths
 Pre-galvanised, hot dip galvanised & stainless

CHS4121

41 x 21 Slotted Channel

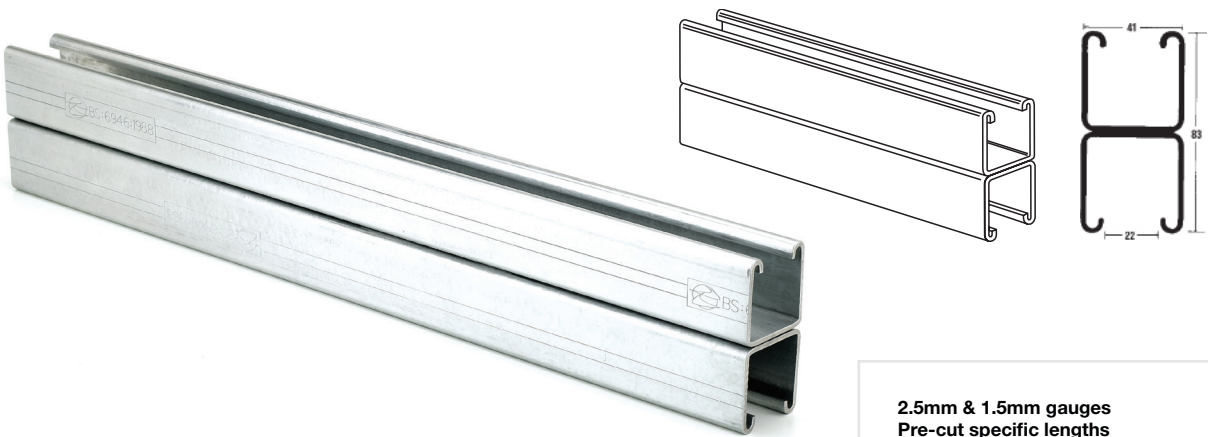


Sizes
1m
2m
3m
4m
6m
Cut to length

2.5mm & 1.5mm gauges
 Pre-cut specific lengths
 Pre-galvanised, hot dip galvanised & stainless

CHBB4141

41 x 41 Back to Back Plain Channel



Sizes
1m
2m
3m
4m
6m
Cut to length

2.5mm & 1.5mm gauges
 Pre-cut specific lengths
 Pre-galvanised, hot dip galvanised & stainless

Channels

CHBB4141 SLOTTED **41 x 41 Back to Back Slotted Channel**

Sizes
1m
2m
3m
4m
6m
Cut to length

2.5mm & 1.5mm gauges
Pre-cut specific lengths
Pre-galvanised, hot dip galvanised & stainless

CHP4141 **41 x 41 Plain Channel**

Sizes
1m
2m
3m
4m
6m
Cut to length

2.5mm & 1.5mm gauges
Pre-cut specific lengths
Pre-galvanised, hot dip galvanised & stainless

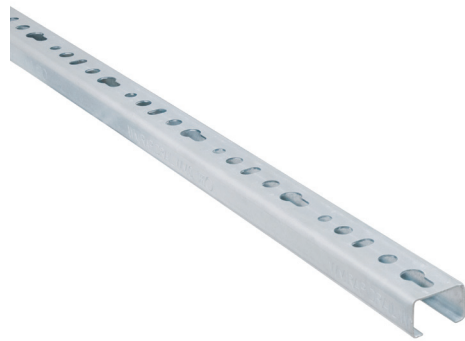
CHP4121 **41 x 21 Plain Channel**

Sizes
1m
2m
3m
4m
6m
Cut to length

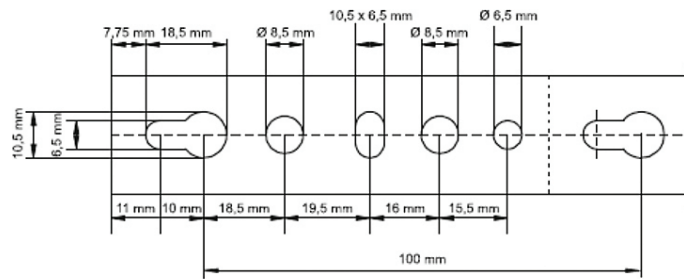
2.5mm & 1.5mm gauges
Pre-cut specific lengths
Pre-galvanised, hot dip galvanised & stainless

Rapidrail Lightweight Channel System

WM0 27 x 18mm Lightweight Channel



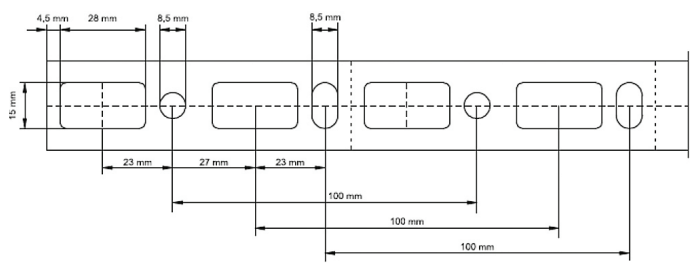
Sizes
2m
Cut to length



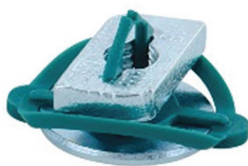
WM15 30 x 20mm Lightweight Channel



Sizes
2m
Cut to length



CHRRN Rapidrail Slide Nuts



Sizes
M6
M8
M10
Fits WM0 & 15

CHRRTB Rapidrail T Bolts



Sizes
M8 x 20 to 200mm
M10 x 20 to 200mm
Fits WM0 & 15

CHRRBH Rapidrail Ball Hanger



Sizes
M10 x 15
M10 x 30
Fits WM0 & 15

CHRRED Rapidrail End Caps



Sizes
M6
M8
M10
Fits WM0 & 15

Channels

CHAN

Channel Iron



Sizes

76 x 30
100 x 50
150 x 75

Material Grade S275
3 & 6m or cut to length
Self Colour finish as standard
Galvanised or Red Oxide to order

ANGLE

Angle Iron



Sizes

30 x 30 x 5
40 x 40 x 5
50 x 50 x 5
60 x 60 x 6
70 x 70 x 6
80 x 80 x 6
100 x 100 x 8

Material Grade S275
3 & 6m or cut to length
Self Colour finish as standard
Galvanised or Red Oxide to order

BOX

Hollow Box Section



Sizes

40 x 40 x 3
50 x 50 x 3
60 x 60 x 5
70 x 70 x 5
80 x 80 x 5
100 x 100 x 6

Material Grade S275
3 & 6m or cut to length
Self Colour finish as standard
Galvanised or Red Oxide to order

UB

Universal Beam



Sizes

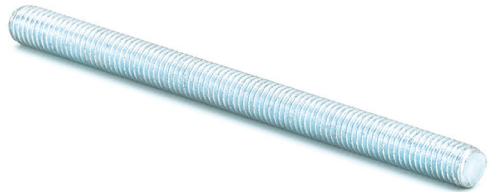
152 x 89
203 x 133 & 102
254 x 146 & 102
305 x 102

Material Grade S275
3 & 6m or cut to length
Self Colour finish as standard
Galvanised or Red Oxide to order

Threaded Rod & Suspension Hangers

RODM

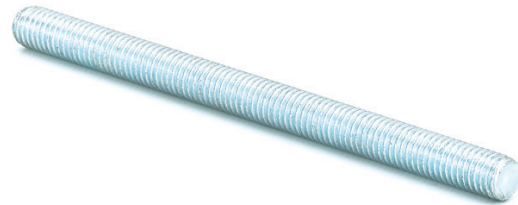
Screwed Rod BZP



Sizes						
Length	M6	M8	M12	M16	M20	M24
1m	✓	✓	✓	✓	✓	✓
2m	✓	✓	✓	✓	✓	✓
3m	✓	✓	✓	✓	✓	✓

STUDM

Cut Studs BZP



Sizes
M6 to M30 Diameters cut to length

EYEM

Eye Rod BZP



Sizes				
Length	M8	M10	M12	M20
80mm	✓	✓	✓	-
100mm	-	✓	✓	-
150mm	-	✓	✓	-
200mm	-	✓	✓	-
250mm	-	✓	✓	✓
300mm	-	✓	✓	-

RODCONM

Hexagon Rod Connector BZP



Sizes
M6
M8
M10
M12
M16
M20
M24

Threaded Rod & Suspension Hangers

BHMV

Ball Hanger BZP



Sizes

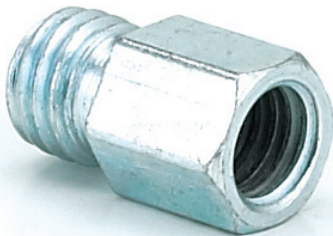
M8

M10

M12

FMADAPT

Reducing Rod Connector BZP



Sizes

M8 x M10

M10 x M12

LEM

Link Eye BZP



Sizes

M8

M10

M12

BNM

Bow Nuts BZP



Sizes

M10

M12

M16

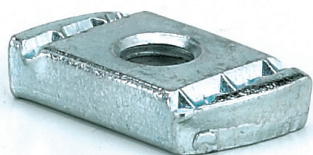
M20

M24

Channel Brackets : Channel Nuts

CHNMP

Channel Nut Plain



Sizes

M6
M8
M10
M12
M16

CHNMSS

Channel Nut Short Spring



Sizes

M6
M8
M10
M12

CHNMLS

Channel Nut Long Spring

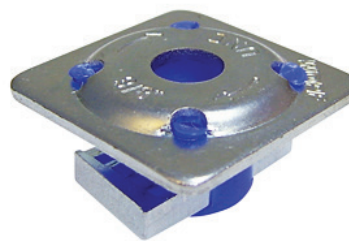


Sizes

M6
M8
M10
M12

QRN

QRN Combi Channel Nut & Plate Washer



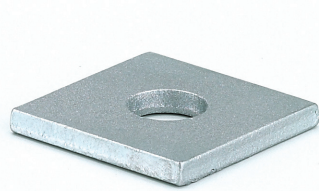
Sizes

M10
M12

Channel Brackets : Flat Plate Fittings

SQWM

Square Washer 6mm Thick



Sizes

M6

M8

M10

M12

M16

P1065

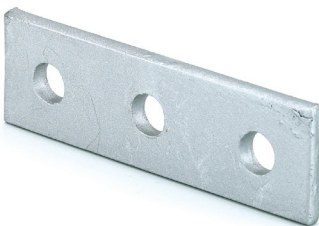
2 Hole Flat Plate



Available in galvanised finish only

P1066

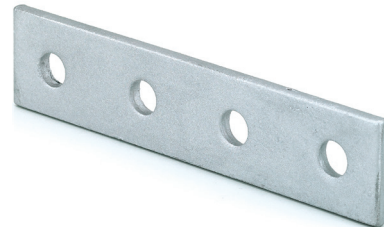
3 Hole Flat Plate



Available in galvanised finish only

P1067

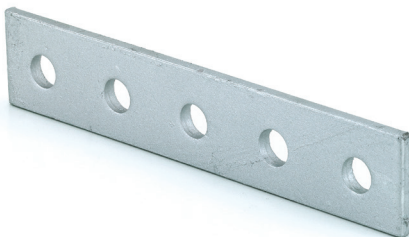
4 Hole Flat Plate



Available in galvanised finish only

P1941

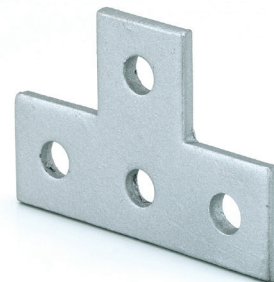
5 Hole Flat Plate



Available in galvanised finish only

P1031

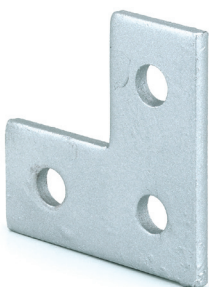
4 Hole Flat Tee



Available in galvanised finish only

P1036

3 Hole Flat L



Available in galvanised finish only

P1358

4 Hole Flat Plate

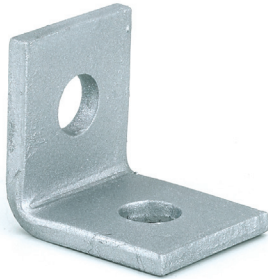


Available in galvanised finish only

Channel Brackets : Angled Fittings

P1026

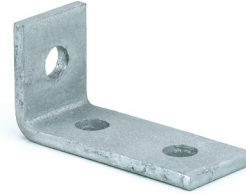
1 + 1 Hole 90° Angle



Available in galvanised finish only

P1326

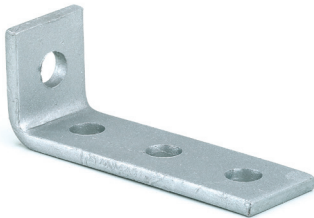
2 + 1 Hole 90° Angle



Available in galvanised finish only

P1278

3 + 1 Hole 90° Angle



Available in galvanised finish only

P1325

2 + 2 Hole 90° Angle



Available in galvanised finish only

P2484

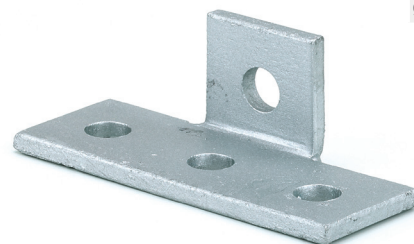
2 + 2 Hole Welded 90°



Available in galvanised finish only

P1033

3 + 1 Hole Central Wing 90°



Available in galvanised finish only

P1186

1 + 1 Hole 45° Internal



Available in galvanised finish only

P1546

1 + 1 Hole 45° External

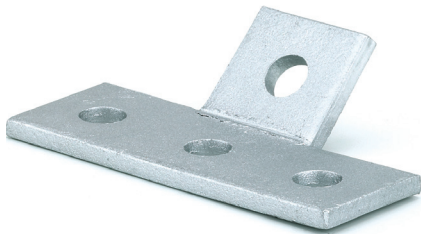


Available in galvanised finish only

Channel Brackets : Angled Fittings & Beam Clamps

P1032

3 + 1 Hole Central Wing 45°



Available in galvanised finish only

P1796A

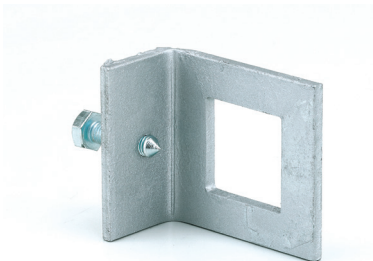
Window Bracket 41 x 21



Size to Suit
41 x 21 Channel
Available in galvanised finish only

P1796

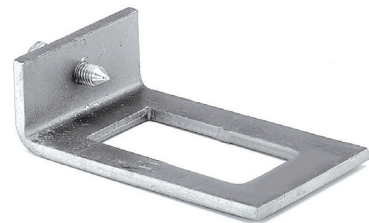
Window Bracket 41 x 41



Size to Suit
41 x 41 Channel
Available in galvanised finish only

P1796D

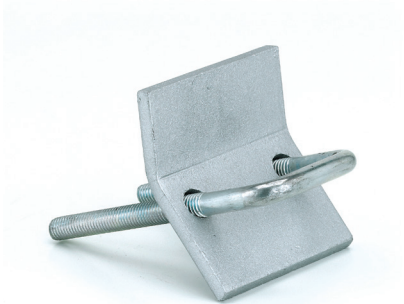
Window Bracket 82 x 41



Size to Suit
82 x 41 Channel
Available in galvanised finish only

P2785

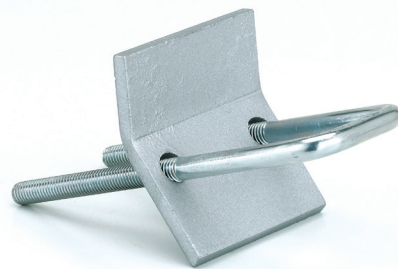
U Bolt Beam Clamp 41 x 41



Size to Suit
41 x 41 Channel
Available in galvanised finish with BZP U Bolt

P2786

U Bolt Beam Clamp 82 x 41



Size to Suit
82 x 41 Channel
Available in galvanised finish with BZP U Bolt

P2489

Fish Tail Clamp



Available in galvanised finish only

P1272

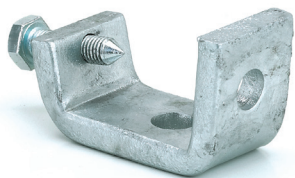
Beam Clamp



Available in galvanised finish only

Channel Brackets : Beam Clamps & Base Plates

P1271 **Beam Clamp**



Available in galvanised finish only

P1386 **Channel Cleat**



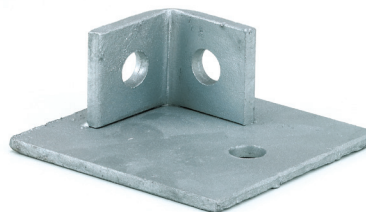
Size to Suit
41 x 41 Channel
Available in galvanised finish only

P3087 **Internal I Beam Clamp**



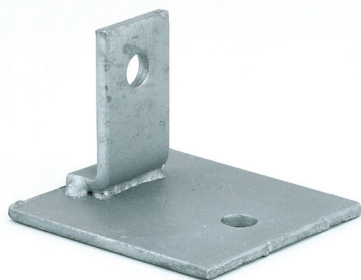
Available in galvanised finish only

P2072-S1 **Double Fix Base Plate**



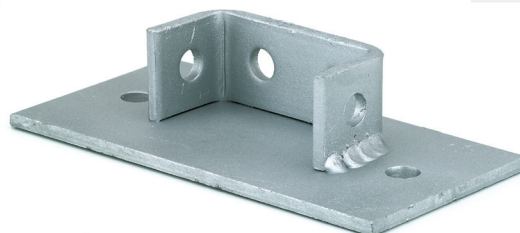
Available in galvanised finish only

P2072-S2 **Single Fix Base Plate**



Available in galvanised finish only

P2073 **82 x 41 Double Base Plate**



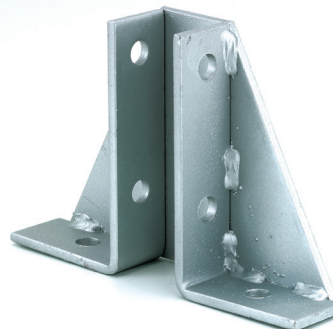
Available in galvanised finish only

P2346 **Tower Wing Bracket**



Available in galvanised finish only

P2348-S1 **Wing Bracket 41 x 41**

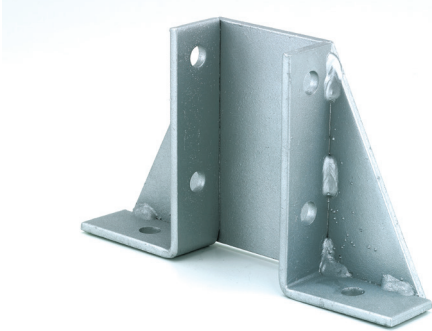


Size to Suit
41 x 41 Channel
Available in galvanised finish only

Channel Brackets : Base Plates & Z & U Shaped Fittings

P2348-S2

Wing Bracket 82 x 41



Size to Suit

82 x 41 Channel

Available in galvanised finish only

P4047

Shallow Top Hat Bracket 41 x 21



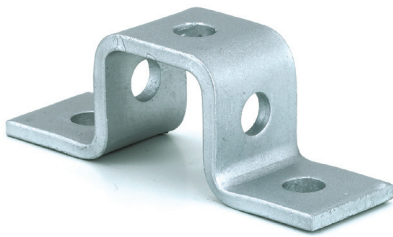
Size to Suit

41 x 21 Channel

Available in galvanised finish only

P1047

Top Hat 41 x 41



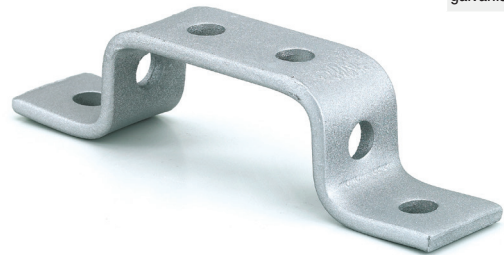
Size to Suit

41 x 41 Channel

Available in galvanised finish only

P1043

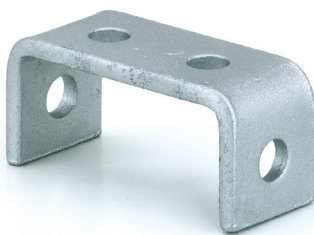
Double Top Hat Bracket 82 x 41



Available in galvanised finish only

P1044

Double U Bracket 82 x 41



Size to Suit

82 x 41 Channel

Available in galvanised finish only

P1737

Deep Top Hat Bracket 82 x 41



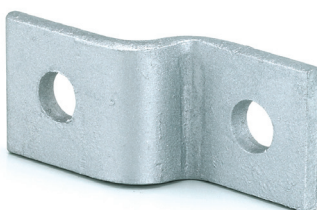
Size to Suit

82 x 41 Channel

Available in galvanised finish only

P4045

Z Fitting 41 x 21



Size to Suit

41 x 21 Channel

Available in galvanised finish only

P1045

Z Fitting 41 x 41



Size to Suit

41 x 41 Channel

Available in galvanised finish only

Channel Brackets : Z & U Shaped Fittings | Cantilever Arms

P1453

Z Fitting 82 x 41



Size to Suit
82 x 41 Channel
Available in galvanised finish only

P1377

U Shaped Splice Plate 41 x 41



Size to Suit
41 x 41 Splice
41 x 21 Splice
Available in galvanised finish only

ECAP4121

End Cap



Size to Suit
41 x 21 Channel
Available in white or black finish

ECAP4141

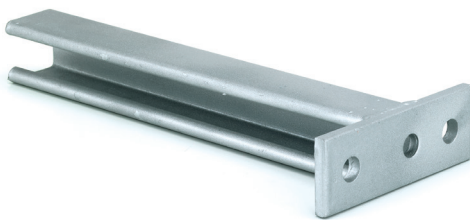
End Cap



Size to Suit
41 x 41 Channel
Available in white or black finish

CARMS

Cantilever Arm



Sizes
320mm
470mm
620mm
750mm
1000mm
Also available in slotted galvanised & stainless
Also available with webbed arm

Fire Protection Brackets & Equipment

SHACKLV

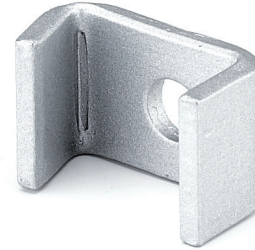
Light Shackle



Available in galvanised finish only

SHACKHDV

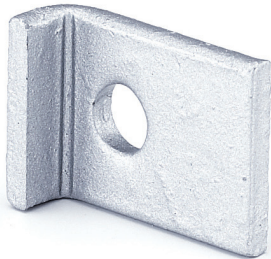
Heavy Shackle



Available in galvanised finish only

SLC

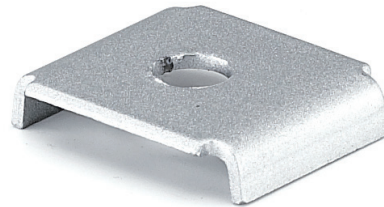
Short Leg Cleat



Available in galvanised finish only

BRIDGEPE

Bridge Piece



Available in galvanised finish only

SBC2

Split Band Clip with 50mm Socket



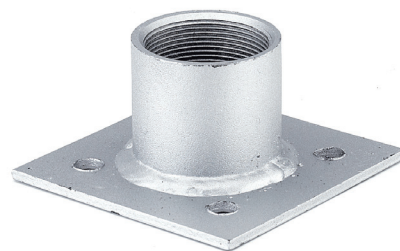
Size to Suit

Various - Please ask for details

Available in galvanised or red oxide finish

FOOTPLATE

50mm Footplate



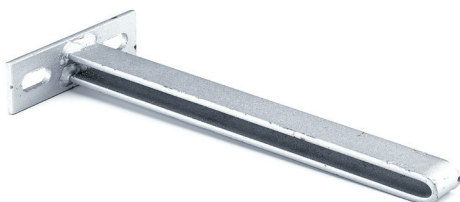
Size to Suit

Various - Please ask for details

Available in galvanised or red oxide finish

WALLBRKT

Wall Brackets



Size to Suit

Various - Please ask for details

Available in galvanised or red oxide finish. Can also be made through 90°

ROS

Rosette



Available in aluminium finish only

Fire Protection Brackets & Equipment

BAF Baffle



Sizes
80mm x 1mm
100mm x 1.6mm
125mm x 1.6mm
150mm x 1.6mm
200mm x 1.6mm
250mm x 1.6mm
300mm x 1.6mm
Available in galvanised finish only

POSGB Push on Sprinkler Guard



With welded baffle
Available in chrome plated finish

POSG Push on Sprinkler Guard



Available in chrome plated finish

ET Eccentric Taper



Size to Suit
Various - Please ask for details
Available in self colour as standard.
Can be made flanged & fully welded

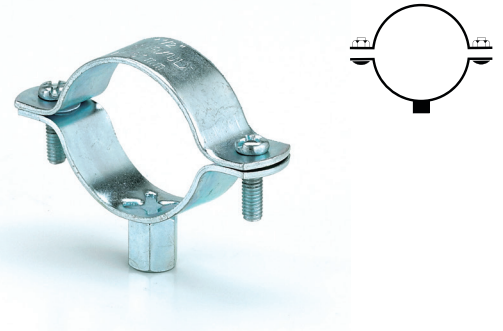
CT Concentric Taper



Size to Suit
Various - Please ask for details
Available in self colour as standard.
Can be made flanged & fully welded

Pipe Supports

PCRL
Rubber Lined Pipe Clips

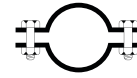
PCUL
Unlined Lightweight Pipe Clips


CODE	Pipe Size	Grip Range (mm)	Boss Type	Screw (mm)	Material (mm)
PCRL015	15cu	13 - 20	M8/M10	M5 x M18	1 x 20
PCRL016-20	18mm	17 - 23	M8/M10	M5 x M18	1 x 20
PCRL022	22cu	21 - 26	M8/M10	M5 x M18	1 x 20
PCRL028	28cu	26 - 35	M8/M10	M5 x M18	1 x 20
PCRL035	35cu	33 - 37	M8/M10	M5 x M18	1 x 20
PCRL042	42cu	40 - 46	M8/M10	M5 x M18	1.2 x 20
PCRL040	1 1/2"	48 - 53	M8/M10	M5 x M18	1.2 x 20
PCRL054	54cu	53 - 59	M8/M10	M5 x M18	1.2 x 20
PCRL050	2"	60 - 66	M8/M10	M5 x M18	1.2 x 20
PCRL067	67cu	67 - 77	M8/M10	M6 x M25	1.5 x 25
PCRL076	76cu	75 - 84	M8/M10	M6 x M25	1.5 x 25
PCRL083	3"	87 - 96	M8/M10	M6 x M25	1.5 x 25
PCRL095	95mm	94 - 104	M8/M10	M6 x M25	1.5 x 25
PCRL108	108cu	102 - 111	M8/M10	M6 x M25	1.5 x 25
PCRL100	4"	109 - 119	M8/M10	M6 x M25	1.5 x 25
PCRL129	120cu	122 - 135	M8/M10	M6 x M25	2 x 25
PCRL125	133cu	128 - 139	M8/M10	M6 x M25	2 x 25
PCRL125	5"	135 - 148	M8/M10	M6 x M25	2 x 25
PCRL159	159cu	151 - 164	M8/M10	M6 x M25	2 x 25
PCRL150	6"	158 - 170	M8/M10	M6 x M25	2 x 25
PCRL200	200mm	200mm	M8/M10	M8 x M30	3 x 30
PCRL250	250mm	250mm	M12/M16	M12 x M30	4 x 40
PCRL315	315mm	315mm	M12/M16	M12 x M30	4 x 40

CODE	Pipe Size	Grip Range (mm)	Boss Type	Screw (mm)	Material (mm)
PCUL012NB	1/2"	19 - 23	M8/M10	M5 x M18	1 x 20
PCUL015	22mm	23 - 28	M8/M10	M5 x M18	1 x 20
PCUL020NB	3/4"	26 - 35	M8/M10	M5 x M18	1 x 20
PCUL025NB	1"	32 - 35	M8/M10	M5 x M18	1 x 20
PCUL032NB	1 1/4"	39 - 43	M8/M10	M5 x M18	1 x 20
PCUL040NB	1 1/2"	45 - 51	M8/M10	M5 x M18	1.2 x 20
PCUL054	55mm	54 - 58	M8/M10	M5 x M18	1.2 x 20
PCUL050NB	2"	60 - 65	M8/M10	M5 x M18	1.2 x 20
PCUL070	70mm	67 - 71	M8/M10	M5 x M18	1.2 x 20
PCUL065NB	2 1/2"	74 - 82	M8/M10	M6 x M25	1.5 x 25
PCUL075NB	85mm	82 - 89	M8/M10	M6 x M25	1.5 x 25
PCUL080	3"	91 - 98	M8/M10	M6 x M25	1.5 x 25
PCUL100	95mm	93 - 101	M8/M10	M6 x M25	1.5 x 25
PCUL105	105mm	102 - 109	M8/M10	M6 x M25	1.5 x 25
PCUL100NB	4"	109 - 117	M8/M10	M6 x M25	1.5 x 25
PCUL120	120mm	116 - 125	M8/M10	M6 x M25	1.5 x 25
PCUL125	125mm	129 - 141	M8/M10	M6 x M25	2 x 25
PCUL125NB	5"	136 - 146	M8/M10	M6 x M25	2 x 25
PCUL145	145mm	142 - 154	M8/M10	M6 x M25	2 x 25
PCUL150NB	6"	158 - 169	M8/M10	M6 x M25	2 x 25
PCUL170	175mm	166 - 177	M8/M10	M6 x M25	2 x 25
WPCUL175	170mm	170 - 180	M10	M8 x M35	3 x 25
WPCUL180	180mm	180 - 190	M10	M8 x M35	3 x 25
WPCUL190	200mm	190 - 200	M10	M8 x M35	3 x 25
WPCUL200NB	8"	212 - 219	M10	M8 x M35	3 x 25

Pipe Supports

SBC Split Band Clips

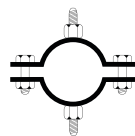


BZP / red oxide / galvanised

CODE	Size ID (mm)	Size NB	Hole Centres (mm)	Bolt Size (mm)	Material (mm)
SBC065ID	65		115	M10 x 30	30 x 3
SBC076ID	76	65NB / 2 1/2"	125	M10 x 30	30 x 3
SBC083ID	83		130	M10 x 30	30 x 3
SBC080	89	80NB / 3"	137	M10 x 30	30 x 3
SBC095ID	95		143	M12 x 40	30 x 3
SBC102ID	102		156	M10 x 30	30 x 3
SBC108ID	108		163	M10 x 30	40 x 3
SBC100	114	100 NB / 4"	175	M10 x 30	40 x 3
SBC121ID	121		187	M10 x 30	40 x 3
SBC127ID	127		190	M10 x 30	40 x 3
SBC133ID	133		200	M10 x 30	40 x 3
SBC139ID	140		205	M10 x 30	40 x 3
SBC146ID	146		210	M10 x 30	40 x 3
SBC152ID	152		218	M10 x 30	40 x 3
SBC159ID	159		228	M12 x 40	40 x 3
SBC168ID	168	150 NB / 6"	236	M12 x 40	40 x 3
SBC173ID	173		240	M12 x 40	40 x 3
SBC178ID	178		248	M12 x 40	40 x 3
SBC186ID	186		258	M12 x 40	40 x 5
SBC193ID	193		265	M12 x 40	40 x 5
SBC199IDBZP	199		276	M12 x 40	40 x 5
SBC208ID	208		284	M12 x 40	40 x 5
SBC216ID	216		290	M12 x 40	40 x 5
SBC220ID	220	200 NB / 8"	300	M12 x 40	40 x 5

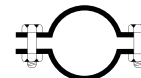
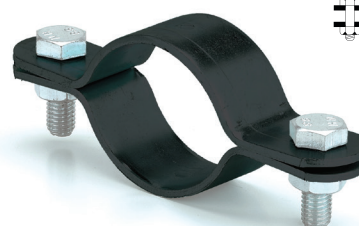
SBC225ID	225		302	M12 x 40	40 x 5
SBC232ID	232		310	M12 x 40	40 x 5
SBC244ID	244		313	M12 x 40	40 x 5
SBC252ID	252		318	M12 x 40	40 x 5
SBC259ID	259		320	M16 x 50	40 x 5
SBC268ID	268		336	M12 x 40	40 x 5
SBC273ID	273	250 NB / 10"	360	M16 x 50	50 x 6
SBC283ID	283		364	M16 x 50	50 x 6
SBC290ID	290		374	M16 x 50	50 x 6
SBC299ID	299		383	M16 x 50	50 x 6
SBC308ID	308		405	M16 x 50	50 x 6
SBC323ID	323	300 NB / 12"	420	M16 x 50	50 x 6
WSBC350NB	356	350 NB / 14"	460	M24 x 100	60 x 10
WSBC400NB	407	400 NB / 16"	535	M24 x 100	60 x 12
WSBC450NB	457	450 NB / 18"	625	M30 x 100	60 x 15
WSBC500NB	508	500 NB / 20"	675	M30 x 110	60 x 15
WSBC550NB	559	550 NB / 22"	725	M30 x 110	80 x 15
WSBC600NB	610	600 NB / 24"	780	M30 x 110	80 x 15

SBCB2 Split Band Clips (Double Bossed)



Size to Suit
 15nb to 400nb direct to steel tube
 45mm to 600mm for insulated support blocks
 BZP / red oxide / galvanised

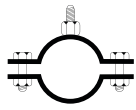
SBCNC Split Band Clips - Nylon Coated



Sizes
 54mm to 159mm
 Nylon coated

Pipe Supports

SBCB Split Band Clips - Bossed



Red oxide / galvanised

UBSM U Bolts Standard Leg



Size to Suit
15nb to 400nb direct to steel tube
45mm to 600mm for insulated support blocks
BZP / stainless steel

CODE	Size ID (mm)	Size NB	Hole Centres (mm)	Bolt Size (mm)	Material (mm)
SBCB60	60 - 65	2"	108	M16/M10/M8	30 x 2.5
SBCB76	76 - 81	2 ½"	137	M16/M10/M8	30 x 3.0
SBCB82	82 - 87		143	M16/M10/M8	30 x 3.0
SBCB89	88 - 93	3"	149	M16/M10/M8	30 x 3.0
SBCB102	102 - 108		163	M16/M10/M8	30 x 3.0
SBCB110	110 - 116	4"	171	M16/M10/M8	30 x 3.0
SBCB124	124 - 129		184	M16/M10/M8	30 x 3.0
SBCB133	133 - 140		210	½"/M16/M12	40 x 4.0
SBCB140	140 - 148	5"	218	½"/M16/M12	40 x 4.0
SBCB149	149 - 155		225	½"/M16/M12	40 x 4.0
SBCB159	159 - 165		235	½"/M16/M12	40 x 4.0
SBCB167	167 - 173	6"	243	½"/M16/M12	40 x 4.0
SBCB176	176 - 184		255	½"/M16/M12	40 x 4.0
SBCB188	188 - 194		265	½"/M16/M12	40 x 4.0
SBCB199	199 - 205		276	½"/M16/M12	40 x 4.0
SBCB207	207 - 216		287	½"/M16/M12	40 x 4.0
SBCB219	219 - 225	8"	296	½"/M16/M12	40 x 4.0
SBCB244	244 - 250		321	½"/M16/M12	40 x 4.0
SBCB267	267 - 273	10"	344	½"/M16/M12	40 x 4.0
SBCB271	271 - 277		325	M16	40 x 4.0
SBCB278	278 - 284		355	½"/M16/M12	40 x 4.0
SBCB297	297 - 303		374	½"/M16/M12	40 x 4.0
SBCB310	310 - 316		387	½"/M16/M12	40 x 4.0
SBCB316	316 - 324	12"	390	M16	50 x 5.0
SBCB348	348 - 356	14"	421	M16	50 x 5.0
SBCB360	360 - 368		431	M16	50 x 5.0
SBCB399	399 - 407	16"	470	M16	50 x 5.0
SBCB411	411 - 419		482	M16	70 x 6.0
SBCB500	500 - 508	20"	569	M16	70 x 6.0
SCBC513	513 - 521		581	M16	70 x 6.0

UBEM U Bolts Extended Leg



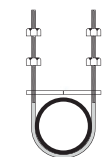
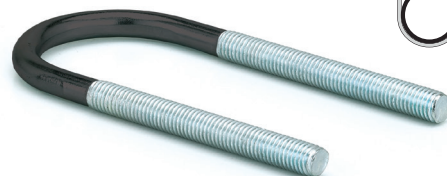
Size to Suit
15nb to 400nb direct to steel tube
45mm to 600mm for insulated blocks
BZP / stainless Steel

STUBC U Bolts Standard Leg (Nylon Coated)



Size to Suit
15mm to 35mm
Nylon coated

EXTUBNC Extended U Bolt (Nylon Coated)

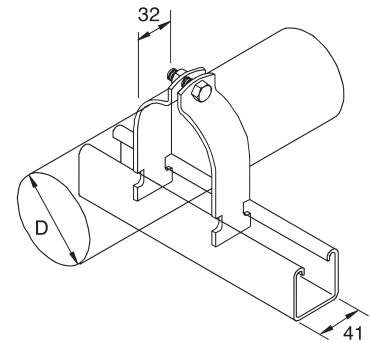


Size to Suit
15mm to 35mm
Nylon coated

Pipe Supports

M11

Pipe Clamp



CODE	D (mm)	Size (mm)
M1108	8.7 - 10.3	9.5
M1109	10.3 - 12.7	11
M1110	11.9 - 13.5	12.5
M1111	13.5 - 14.3	14
M1112	14.3 - 16.7	15
M1113	15.9 - 18.3	17
M1114	18.3 - 20.6	19
M1115	19.0 - 21.4	20
M1116	21.4 - 25.4	23
M1117	25.4 - 27.8	26.5
M1118	27.0 - 30.2	28.5
M1119	30.2 - 33.8	32
M1120	31.8 - 35.9	34
M1121	34.9 - 39.7	37
M1122	39.7 - 42.9	41
M1123	42.9 - 46.8	44
M1124	46.8 - 50.8	48
M1125	48.4 - 52.4	50
M1126	52.4 - 58.7	54
M1127	58.7 - 63.5	61
M1128	63.5 - 68.3	66
M1129	68.3 - 73.0	70
M1130	73.0 - 79.4	76
M1131	76.2 - 82.6	79
CODE	D (mm)	Size (mm)
M1132	82.6 - 88.1	85
M1133	88.1 - 95.2	90
M1134	95.2 - 100.0	97
M1135	100.0 - 106.4	102
M1136	106.4 - 111.1	109

M1137	111.1 - 120.7	115
M1138	120.7 - 129.4	125
M1139	129.4 - 138.1	133
M1140	138.1 - 149.2	142
M1141	149.2 - 161.9	155
M1142	161.9 - 174.6	168
M1143	174.6 - 182.6	178
M1144	182.6 - 190.5	186
M1145	190.5 - 203.2	195
M1146	203.2 - 212.7	206
M1147	212.7 - 225.4	218
M1148	225.4 - 238.1	232
M1149	238.1 - 250.8	244
M1150	250.8 - 263.5	257
M1151	263.5 - 276.2	269
M1152	275.2 - 288.9	282
M1153	288.9 - 301.6	295
M1154	301.6 - 314.3	308
M1155	314.3 - 327.0	320

Pipe Supports

SAD Pipe Saddle



Size to Suit
15nb to 300nb
BZP / red oxide / galvanised

SADNC Pipe Saddle - Nylon Coated



Size to Suit
15mm to 159mm
Nylon coated

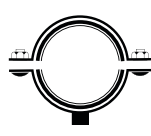
FIL Filbow Clamp



Sizes
15nb to 200nb
Pre-galvanised
FM & LPC Approved

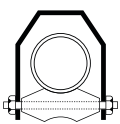


WPCGRL Green Lined Pipe Clips



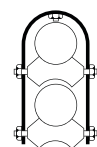
Sizes
15mm to 160mm
BZP

HDRB Heavy Duty Roller Bracket



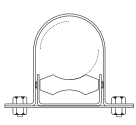
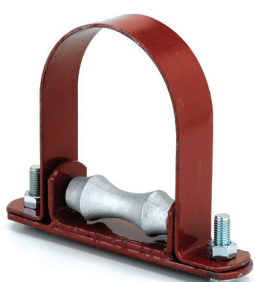
Size to Suit
25nb to 600nb
BZP / red oxide

DRB Double Roller Bracket



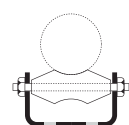
Size to Suit
25nb to 125nb
BZP / red oxide

RCGA Roller Chair & Guide Assembly



Size to Suit
65nb to 600nb
BZP / red oxide

RC Roller & Chair



Size to Suit
65nb to 300nb
BZP / red oxide

Pipe Supports

BPMBLK Black Back Plate Female



Sizes
M10 & M12
Black



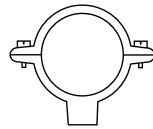
BPMG Galvanised Back Plate Female



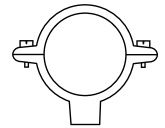
Sizes
M10 & M12
Galvanised



MUNSC Black Single Munsen Ring M10/M12



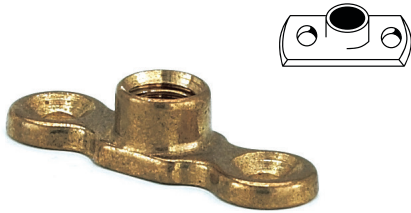
MUNG Galv Single Munsen Ring M10/M12



CODE	Description	Size
MUN015SC	15mm Black Single Munsen Ring	M10
MUN020SC	20mm Black Single Munsen Ring	M10
MUN025SC	25mm Black Single Munsen Ring	M10
MUN032SC	32mm Black Single Munsen Ring	M10
MUN040SC	40mm Black Single Munsen Ring	M10
MUN050SC	50mm Black Single Munsen Ring	M10
MUN065SC	65mm Black Single Munsen Ring	M12
MUN080SC	80mm Black Single Munsen Ring	M12
MUN100SC	100mm Black Single Munsen Ring	M12
MUN125SC	125mm Black Single Munsen Ring	M12
MUN150SC	150mm Black Single Munsen Ring	M12

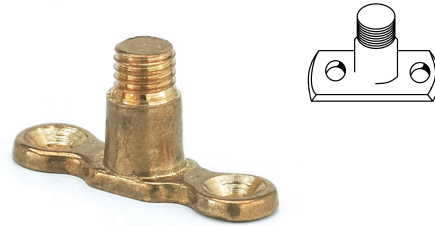
CODE	Description	Size
MUN015G	15mm Galvanised Single Munsen Ring	M10
MUN020G	20mm Galvanised Single Munsen Ring	M10
MUN025G	25mm Galvanised Single Munsen Ring	M10
MUN032G	32mm Galvanised Single Munsen Ring	M10
MUN040G	40mm Galvanised Single Munsen Ring	M10
MUN050G	50mm Galvanised Single Munsen Ring	M10
MUN065G	65mm Galvanised Single Munsen Ring	M12
MUN080G	80mm Galvanised Single Munsen Ring	M12
MUN100G	100mm Galvanised Single Munsen Ring	M12
MUN125G	125mm Galvanised Single Munsen Ring	M12
MUN150G	150mm Galvanised Single Munsen Ring	M12

Pipe Supports

BPMF
Brass Back Plate Female

Sizes

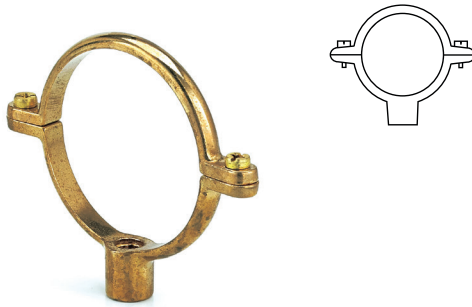
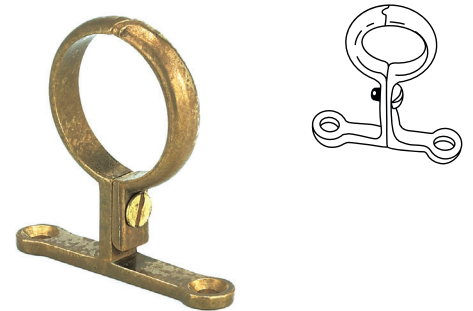
M10

Brass

BPMM
Brass Back Plate Male

Sizes

M10

Brass

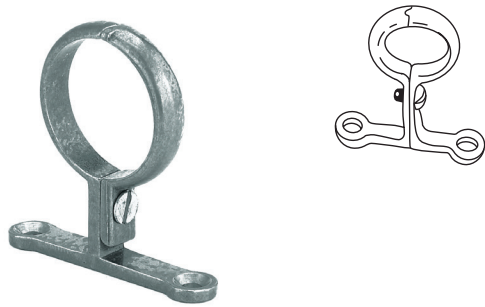
MUNB
Brass Single Munsen Ring M10

SBB
Brass Screw on Bracket


CODE	Description	Size
MUN015B	15mm Brass Single Munsen Ring	M10
MUN022B	22mm Brass Single Munsen Ring	M10
MUN028B	28mm Brass Single Munsen Ring	M10
MUN035B	35mm Brass Single Munsen Ring	M10
MUN042B	42mm Brass Single Munsen Ring	M10
MUN054B	54mm Brass Single Munsen Ring	M10
MUN067B	67mm Brass Single Munsen Ring	M10
MUN076B	76mm Brass Single Munsen Ring	M12

CODE	Description
SB015B	15mm Cast Brass Screw On Bracket
SB022B	22mm Cast Brass Screw On Bracket
SB028B	28mm Cast Brass Screw On Bracket
SB035B	35mm Cast Brass Screw On Bracket
SB042B	42mm Cast Brass Screw On Bracket
SB054B	54mm Cast Brass Screw On Bracket

Pipe Supports

SBG Galvanised Screw on Bracket



SBMI Black Screw on Bracket



CODE	Description
SB015G	15mm Galvanised Screw On Bracket
SB020G	20mm Galvanised Screw On Bracket
SB025G	25mm Galvanised Screw On Bracket
SB032G	32mm Galvanised Screw On Bracket
SB040G	40mm Galvanised Screw On Bracket
SB050G	50mm Galvanised Screw On Bracket

CODE	Description
SB015MI	15mm Black Screw On Bracket
SB020MI	20mm Black Screw On Bracket
SB025MI	25mm Black Screw On Bracket
SB032MI	32mm Black Screw On Bracket
SB040MI	40mm Black Screw On Bracket
SB050MI	50mm Black Screw On Bracket
SB065MI	65mm Black Screw On Bracket

MUNDB Brass Single Munsen Ring Double Boss M10



Sizes
15mm to 54mm
Brass

MUND Black / Galvanised Double Bossed Munsen Ring M10/M12



Sizes
15nb to 150nb
Black & galvanised

Pipe Supports

PCTS

Talon Single Hinged Pipe Clip



Sizes

15mm to 28mm

PCTD

Double Hinged Pipe Clip



Sizes

15mm & 22mm

PCTSP1

Talon Standard Spacer



Sizes

15mm to 28mm

To be used with single hinged clip

PCNCW

Talon Nail-In Clip



Sizes

10mm to 28mm

PCBC

Talon Box Cover

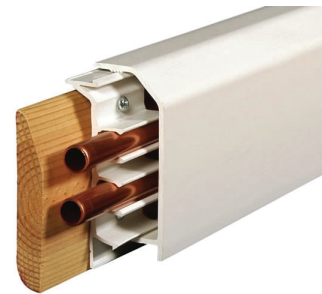


Sizes

15mm & 22mm

PCSC

Talon Skirting Cover



Sizes

105mm x 2.5 or 3m

Fasteners

NUTM Hexagon Nut BZP



Sizes
M6
M8
M10
M12
M16
M20
M30

NUTFM Flanged Nut BZP



Sizes
M8
M10
M12
M16

WASHERM Plain Round Washer BZP



Sizes
M6
M8
M10
M12
M16
M20
M30

SPRING WASHER Spring Washer BZP



Sizes
M6
M8
M10
M12
M16
M20
M30

PENNYWM Penny Washer BZP



O / D	Sizes			
	M6	M8	M10	M12
20mm	✓	-	-	-
25mm	✓	✓	✓	-
30mm	✓	✓	✓	-
40mm	-	✓	✓	✓

ALSO AVAILABLE IN HOT DIP GALVANISED & STAINLESS STEEL

Fasteners

RPLUG Plastic Wall Plugs



Sizes	
Red / 5.5mm	
Brown / 7mm	

HSCP Cone Point Screw GR 8.8 BZP



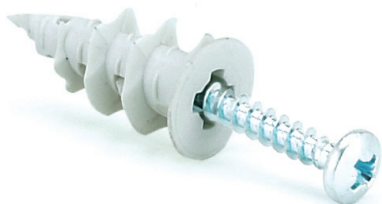
Size to Suit	
Length	M10
40mm	✓

RBM Roofing Bolt & Nut BZP



Metric Sizes		
Length	M5	M6
12mm	-	✓
16mm	-	✓
20mm	-	✓
25mm	✓	✓
30mm	-	✓
50mm	-	✓
60mm	-	✓

PLASTER BFM Plaster Board Fixing



Sizes	
4.5 x 35mm	
4.5 x 50mm	

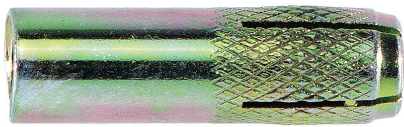
WOODPC Pz Wood Screws BZP



Sizes	No4	No5	No6	No8	No10	No12
Length						
5/8"	✓	✓	-	-	-	-
1/2"	✓	✓	✓	✓	-	-
3/4"	✓	✓	✓	✓	✓	✓
1"	✓	-	✓	✓	✓	✓
1.25"	-	-	✓	✓	✓	✓
1.5"	-	-	✓	✓	✓	✓
1.75"	-	-	✓	✓	✓	✓
2"	-	-	-	✓	✓	✓
2.5"	-	-	-	✓	✓	✓
3.5"	-	-	-	-	✓	✓
4"	-	-	-	-	✓	✓

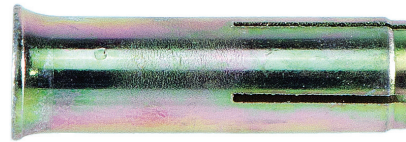
Concrete Anchors

HKDS Drop In Standard Anchor



Sizes
M6
M8
M10
M12
M16
M20

HKDS LIPPED Drop In Anchor Lipped



Sizes
M6
M8
M10
M12
M16

SETTING Drop In Anchor Setting Tool



Sizes
M6
M8
M10
M12
M16
M20

HSAK Through Bolt



Sizes
M6
M8
M10
M12
M16
M20
M22
M24

SLB Sleeve Anchor



Sizes
M6
M8
M10
M12
M16

APB Shield Anchor



Sizes
M6
M8
M10
M12
M16

ANKER Concrete Screw Hex Head



Sizes
M6
M8
M10
M12
M16

TAPCON Concrete Screw Rod Hanger

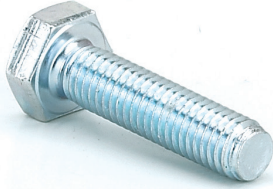


Sizes
M8
M10
Dual thread

Fasteners

HSM

Hexagon Set Screw Gr 8.8 BZP



Sizes							
Length	M6	M8	M10	M12	M16	M20	M24
20mm	✓	✓	✓	✓	-	-	-
25mm	✓	✓	✓	✓	✓	-	-
30mm	✓	✓	✓	✓	✓	✓	-
35mm	✓	✓	✓	✓	✓	-	-
40mm	✓	✓	✓	✓	✓	✓	-
45mm	✓	✓	✓	✓	✓	✓	-
50mm	✓	✓	✓	✓	✓	✓	✓
55mm	✓	✓	✓	✓	✓	✓	✓
60mm	✓	✓	✓	✓	✓	✓	✓
65mm	✓	✓	✓	✓	✓	✓	✓
70mm	✓	✓	✓	✓	✓	✓	✓
75mm	✓	✓	✓	✓	✓	✓	✓
80mm	✓	✓	✓	✓	✓	✓	✓
85mm	✓	✓	✓	✓	✓	✓	✓
90mm	✓	✓	✓	✓	✓	✓	✓
95mm	✓	✓	✓	✓	✓	✓	✓
100mm	✓	✓	✓	✓	✓	✓	✓
120mm	✓	✓	✓	✓	✓	✓	✓
140mm	✓	✓	✓	✓	✓	✓	✓

Also available in hot dip galvanised & stainless steel

Fasteners

HBM Hexagon Head Bolts BZP



Sizes							
Length	M6	M8	M10	M12	M16	M20	M24
20mm	-	-	-	-	-	-	-
25mm	✓	-	-	-	-	-	-
30mm	✓	✓	-	-	-	-	-
35mm	✓	✓	✓	-	-	-	-
40mm	✓	✓	✓	✓	-	-	-
45mm	✓	✓	✓	✓	✓	-	-
50mm	✓	✓	✓	✓	✓	-	-
55mm	✓	✓	✓	✓	✓	✓	-
60mm	✓	✓	✓	✓	✓	✓	-
65mm	✓	✓	✓	✓	✓	✓	-
70mm	✓	✓	✓	✓	✓	✓	✓
75mm	✓	✓	✓	✓	✓	✓	✓
80mm	✓	✓	✓	✓	✓	✓	✓
85mm	-	-	-	-	-	-	-
90mm	-	✓	✓	✓	✓	✓	✓
95mm	-	-	-	-	-	-	-
100mm	-	✓	✓	✓	✓	✓	✓
120mm	-	✓	✓	✓	✓	✓	✓
140mm	-	✓	✓	✓	✓	✓	✓

Also available in hot dip galvanised & stainless steel

FSC® Certified Wood Insulating Blocks

WB

FSC® Certified Hard Wood Block



- **Manufactured in-house.**
- **FSC® Certified.**
- **Temperature Limit: 100°C**
- **Suitable for use with LTHW + CHW Pipework.**
- **Standard Length Supplied: 100mm.**
- **Foil faced also available.**
- **Notching out available for trace heating.**
- **Excellent load bearing capacities.**
- **Site durable.**

		STEEL PIPE											
		NB	O/D	Insulation Thickness									
Inch	mm	mm	15	20	25	30	35	40	50	65	80	100	
½"	15	21	✓	✓	✓	✓	✓	✓	✓	✓	✓	✓	
¾"	20	27	✓	✓	✓	✓	✓	✓	✓	✓	✓	✓	
1"	25	34	✓	✓	✓	✓	✓	✓	✓	✓	✓	✓	
1¼"	32	42	✓	✓	✓	✓	✓	✓	✓	✓	✓	✓	
1½"	40	48	✓	✓	✓	✓	✓	✓	✓	✓	✓	✓	
2"	50	60	✓	✓	✓	✓	✓	✓	✓	✓	✓	✓	
2½"	65	76	✓	✓	✓	✓	✓	✓	✓	✓	✓	✓	
3"	80	89	✓	✓	✓	✓	✓	✓	✓	✓	✓	✓	
4"	100	114	✓	✓	✓	✓	✓	✓	✓	✓	✓	✓	
5"	125	140	✓	✓	✓	✓	✓	✓	✓	✓	✓	✓	
6"	150	168	✓	✓	✓	✓	✓	✓	✓	✓	✓	✓	
8"	200	220	✓	✓	✓	✓	✓	✓	✓	✓	✓	✓	
10"	250	273	✓	✓	✓	✓	✓	✓	✓	✓	✓	✓	
12"	300	324	✓	✓	✓	✓	✓	✓	✓	✓	✓	✓	
14"	350	356	✓	✓	✓	✓	✓	✓	✓	✓	✓	✓	

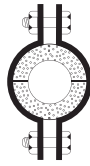
		COPPER PIPE										
		O/D	Insulation Thickness									
mm		15	20	25	30	35	40	50	65	80	100	
15		✓	✓	✓	✓	✓	✓	✓	✓	✓	✓	
22		✓	✓	✓	✓	✓	✓	✓	✓	✓	✓	
28		✓	✓	✓	✓	✓	✓	✓	✓	✓	✓	
36		✓	✓	✓	✓	✓	✓	✓	✓	✓	✓	
42		✓	✓	✓	✓	✓	✓	✓	✓	✓	✓	
54		✓	✓	✓	✓	✓	✓	✓	✓	✓	✓	
67		✓	✓	✓	✓	✓	✓	✓	✓	✓	✓	
76		✓	✓	✓	✓	✓	✓	✓	✓	✓	✓	
108		✓	✓	✓	✓	✓	✓	✓	✓	✓	✓	
133		✓	✓	✓	✓	✓	✓	✓	✓	✓	✓	
159		✓	✓	✓	✓	✓	✓	✓	✓	✓	✓	



The mark of responsible forestry

Phenolic Insulating Blocks

PB Phenolic Insulating Block



- **Temperature Limit:** -180°C to +100°C
- **Suitable for use with:** LTHW & CHW Pipework.
- **Standard Lengths Supplied:** 100mm (15 to 125mm Nominal) 125mm (150 to 200mm Nominal) 200mm on 200mm Nominal and above.
- **CE Marked.**

		STEEL PIPE											
		NB	O/D	Insulation Thickness									
Inch	mm	mm	15	20	25	30	35	40	50	65	80	100	
1/2"	15	21	✓	✓	✓	✓	✓	✓	✓	✓	✓	✓	
3/4"	20	27	✓	✓	✓	✓	✓	✓	✓	✓	✓	✓	
1"	25	34	✓	✓	✓	✓	✓	✓	✓	✓	✓	✓	
1 1/4"	32	42	✓	✓	✓	✓	✓	✓	✓	✓	✓	✓	
1 1/2"	40	48	✓	✓	✓	✓	✓	✓	✓	✓	✓	✓	
2"	50	60	✓	✓	✓	✓	✓	✓	✓	✓	✓	✓	
2 1/2"	65	76	✓	✓	✓	✓	✓	✓	✓	✓	✓	✓	
3"	80	89	✓	✓	✓	✓	✓	✓	✓	✓	✓	✓	
4"	100	114	✓	✓	✓	✓	✓	✓	✓	✓	✓	✓	
5"	125	140	✓	✓	✓	✓	✓	✓	✓	✓	✓	✓	
6"	150	168	✓	✓	✓	✓	✓	✓	✓	✓	✓	✓	
8"	200	220	✓	✓	✓	✓	✓	✓	✓	✓	✓	✓	
10"	250	273	✓	✓	✓	✓	✓	✓	✓	✓	✓	✓	
12"	300	324	✓	✓	✓	✓	✓	✓	✓	✓	✓	✓	
14"	350	356	✓	✓	✓	✓	✓	✓	✓	✓	✓	✓	

CS Calcium Silicate Block



- **Temperature Limit:** Maximum 600°C
- **Suitable for use with:** Steam Pipework.
- **Standard Length Supplied:** 100mm.

		COPPER PIPE										
		O/D	Insulation Thickness									
		mm	15	20	25	30	35	40	50	65	80	100
15	✓	✓	✓	✓	✓	✓	✓	✓	✓	✓	✓	✓
22	✓	✓	✓	✓	✓	✓	✓	✓	✓	✓	✓	✓
28	✓	✓	✓	✓	✓	✓	✓	✓	✓	✓	✓	✓
36	✓	✓	✓	✓	✓	✓	✓	✓	✓	✓	✓	✓
42	✓	✓	✓	✓	✓	✓	✓	✓	✓	✓	✓	✓
54	✓	✓	✓	✓	✓	✓	✓	✓	✓	✓	✓	✓
67	✓	✓	✓	✓	✓	✓	✓	✓	✓	✓	✓	✓
76	✓	✓	✓	✓	✓	✓	✓	✓	✓	✓	✓	✓
108	✓	✓	✓	✓	✓	✓	✓	✓	✓	✓	✓	✓
133	✓	✓	✓	✓	✓	✓	✓	✓	✓	✓	✓	✓
159	✓	✓	✓	✓	✓	✓	✓	✓	✓	✓	✓	✓

Shawston Insulated Block & Clip Selection Chart



A

**LIGHTWEIGHT UNLINED CLIP
M8 / M10**



B

**SPLIT BAND CLIP
UN-BOSSED**



C

U-BOLT

Pipe Nb	Size (mm)	Size Cu	Clip Type	Insulation Wall Thickness (mm)							
				15	20	25	30	35	40	50	60
-	-	15	A	PCUL040NB	PCUL054	PCUL070	PCUL065NB	PCUL075NB	PCUL080	PCUL100NB	PCUL125
			B	SBC040	SBC050	SBC065ID	SBC076ID	SBC083ID	SBC095ID	SBC100	SBC121ID
			C	UBSM10X040	UBSM10X054	UBSM10X065ID	UBSM10X065	UBSM10X080	UBSM10X095	UBSM10X100	UBSM10X133
15	21	22	A	PCUL040NB	PCUL050NB	WPCUL065NB	PCUL075NB	PCUL080	PCUL105	PCUL120	PCUL125NB
			B	SBC040	SBC065ID	SBC076ID	SBC083ID	SBC095ID	SBC102ID	SBC121ID	SBC146ID
			C	UBSM10X054	UBSM10X065ID	UBSM10X065	UBSM10X083	UBSM10X095	UBSM10X102	UBSM10X121	UBSM10X125
20	27	28	A	PCUL054	PCUL070	PCUL065NB	PCUL075NB	PCUL100	PCUL105	PCUL125	PCUL145
			B	SBC050	SBC065ID	SBC076ID	SBC080	SBC102ID	SBC108ID	SBC127ID	SBC146ID
			C	UBSM10X050	UBSM10X070	UBSM10X083	UBSM10X080	UBSM10X102	UBSM10X108	UBSM10X127	UBSM10X152
25	34	35	A	PCUL050NB	PCUL065NB	PCUL075NB	PCUL080	PCUL105	PCUL100NB	PCUL125	PCUL145
			B	SBC065ID	SBC065ID	SBC083ID	SBC095ID	SBC108ID	SBC100	SBC139ID	SBC159ID
			C	UBSM10X065ID	UBSM10X065	UBSM10X080	UBSM10X095	UBSM10X108	UBSM10X100	UBSM10X125	UBSM10X152
32	42	42	A	WPCUL065NB	PCUL075NB	PCUL080	PCUL105	PCUL100NB	PCUL120	PCUL125NB	PCUL150NB
			B	SBC076ID	SBC083ID	SBC095ID	SBC102ID	SBC100	SBC121ID	SBC146ID	SBC168ID
			C	UBSM10X065	UBSM10X083	UBSM10X095	UBSM10X102	UBSM10X100	UBSM10X121	UBSM10X146	UBSM10X150
40	48	-	A	PCUL065NB	PCUL075NB	PCUL100	PCUL105	PCUL120	PCUL125	PCUL145	PCUL170
			B	SBC083ID	SBC080	SBC102ID	SBC108ID	SBC121ID	SBC127ID	SBC152ID	SBC168ID
			C	UBSM10X083	UBSM10X080	UBSM10X102	UBSM10X108	UBSM10X121	UBSM10X127	UBSM10X152	UBSM10X150
-	-	54	A	PCUL075NB	PCUL100	PCUL105	PCUL100NB	PCUL120	PCUL125NB	PCUL145	PCUL170
			B	SBC083ID	SBC095ID	SBC108ID	SBC100	SBC127ID	SBC133ID	SBC152ID	SBC173ID
			C	UBSM10X083	UBSM10X095	UBSM10X108	UBSM10X100	UBSM10X127	UBSM10X133	UBSM10X152	UBSM10X173
50	60	-	A	PCUL080	PCUL100	PCUL100NB	PCUL120	PCUL125	PCUL125NB	PCUL150NB	WPCUL180
			B	SBC080	SBC102ID	SBC100	SBC121ID	SBC133ID	SBC139ID	SBC159ID	SBC178ID
			C	UBSM10X080	UBSM10X102	UBSM10X100	UBSM10X121	UBSM10X133	UBSM10X125	UBSM10X150	UBSM12X186
-	-	67	A	PCUL080	PCUL105	PCUL120	PCUL125	PCUL125NB	PCUL145	PCUL170	WPCUL180
			B	SBC095ID	SBC108ID	SBC121ID	SBC127ID	SBC139ID	SBC146ID	SBC168ID	SBC186ID
			C	UBSM10X102	UBSM10X108	UBSM10X121	UBSM10X127	UBSM10X146	UBSM10X146	UBSM10X150	UBSM12X186
65	76	76	A	PCUL105	PCUL100NB	PCUL120	PCUL125NB	PCUL145	PCUL150NB	PCUL170	WPCUL190
			B	SBC108ID	SBC100	SBC127ID	SBC139ID	SBC146ID	SBC159ID	SBC178ID	SBC199IDBZP
			C	UBSM10X108	UBSM10X100	UBSM10X127	UBSM10X125	UBSM10X146	UBSM10X152	UBSM10X173	UBSM12X199

Shawston Insulated Block & Clip Selection Chart

Pipe Nb	Size (mm)	Size Cu	Clip Type	Insulation Wall Thickness (mm)							
				15	20	25	30	35	40	50	60
80	89	89	A	PCUL120	PCUL125	PCUL125NB	PCUL145	PCUL150NB	PCUL170	WPCUL180	WPCUL200NB
			B	SBC121ID	SBC133ID	SBC139ID	SBC152ID	SBC159ID	SBC168ID	SBC193ID	SBC208ID
			C	UBSM10X121	UBSM10X133	UBSM10X125	UBSM10X146	UBSM10X152	UBSM10X150	UBSM12X186	UBSM12X208
-	-	108	A	PCUL125NB	PCUL145	PCUL150NB	PCUL170	WPCUL175	WPCUL180	WPCUL200NB	-
			B	SBC139ID	SBC152ID	SBC159ID	SBC168ID	SBC178ID	SBC193ID	SBC208ID	SBC232ID
			C	UBSM10X125	UBSM10X152	UBSM10X150	UBSM10X150	UBSM12X186	UBSM12X186	UBSM12X208	UBSM12X225
100	114	-	A	PCUL125NB	PCUL145	PCUL150NB	PCUL170	WPCUL180	WPCUL190	WPUCL200NB	-
			B	SBC146ID	SBC152ID	SBC168ID	SBC176ID	SBC186ID	SBC199IDBZP	SBC216ID	SBC232ID
			C	UBSM10X146	UBSM10X152	UBSM10X150	UBSM12X173	UBSM12X186	UBSM12X199	UBSM12X216	UBSM12X238
-	-	133	A	PCUL150NB	PCUL170	WPCUL180	WPCUL193	WPCUL190	WPCUL200NB	-	-
			B	SBC168ID	SBC173ID	SBC186ID	SBC193ID	SBC208ID	SBC216ID	SBC232ID	SBC252ID
			C	UBSM10X150	UBSM12X173	UBSM12X186	UBSM12X199	UBSM12X208	UBSM12X216	UBSM12X238	UBSM12X252
125	139	-	A	PCUL170	WPCUL175	WPCUL180	WPCUL190	WPCUL200NB	WPCUL200NB	-	-
			B	SBC168ID	SBC178ID	SBC193ID	SBC199IDBZP	SBC208ID	SBC220ID	SBC244ID	SBC259ID
			C	UBSM10X150	UBSM12X186	UBSM12X186	UBSM12X199	UBSM12X208	UBSM12X200	UBSM12X238	UBSM12X259
-	-	159	A	WPCUL180	WPCUL190	-	-	-	-	-	-
			B	SBC193ID	SBC199IDBZP	SBC208ID	SBC220ID	SBC232ID	SBC244ID	SBC259ID	SBC283ID
			C	UBSM10X186	UBSM12X199	UBSM12X208	UBSM12X200	UBSM12X225	UBSM12X238	UBSM12X259	UBSM12X250
150	165	-	A	WPCUL190	WPCUL190	WPCUL200NB	-	-	-	-	-
			B	SBC199IDBZP	SBC208ID	SBC216ID	SBC232ID	SBC232ID	SBC244ID	SBC268ID	SBC283ID
			C	UBSM12X199	UBSM12X208	UBSM12X216	UBSM12X225	UBSM12X238	UBSM12X244	UBSM12X268	UBSM12X290
200	219	-	B	SBC252ID	SBC259ID	SBC268ID	SBC283ID	SBC290ID	SBC299ID	SBC323ID	WSBS342
			C	UBSM12X252	UBSM12X259	UBSM12X268	UBSM12X290	UBSM12X290	UBSM12X299	UBSM12X300	UBSM16X342
250	273	-	B	WSBC302	WSBC315	SBC323ID	WSBC335	WSBC342	WSBC350	WSBC370	WSBC395
			C	UBSM16X302	UBSM16X315	UBSM16X300	UBSM16X335	UBSM16X342	UBSM16X350	UBSM16X370	UBSM16X395
300	324	-	B	WSBC355	WSBC363	WSBC370	WSBC385	WSBC395	WSBC405	WSBC425	WSBC442
			C	UBSM16X350	UBSM16X363	UBSM16X370	UBSM16X385	UBSM16X395	UBSM20X405	UBSM20X425	UBSM20X442
350	355	-	B	WSBC385	WSBC395	WSBC405	WSBC419	WSBC425	WSBC438	WSBC450NB	WSBC475
			C	UBSM16X385	UBSM16X395	UBSM20X405	UBSM20X419	UBSM20X425	UBSM20X438	UBSM20X450NB	UBSM20X475
400	406	-	B	WSBC438	WSBC442	WSBC450NB	WSBC464	WSBC475	WSBC475	WSBC500NB	WSBC526
			C	UBSM20X438	UBSM20X442	UBSM20X450NB	UBSM20X464	UBSM20X475	UBSM20X475	UBSM20X500NB	UBSM20X526
450	457	-	B	WSBC475	WSBC500NB	WSBC510	WSBC510	WSBC527	WSBC537	WSBC557	WSBC577
			C	UBSM20X438	UBSM20X500NB	UBSM20X510	UBSM20X510	UBSM20X527	UBSM20X537	UBSM20X557	UBSM20X577

OTHER BLOCK SUPPORTS ALSO AVAILABLE UPON REQUEST:



EXTENDED LEG U BOLTS



BOSSSED SPLIT BAND CLIP



SADDLE CLAMP

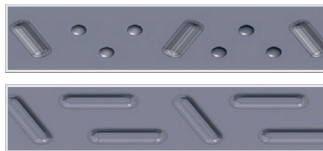
Lindapter: Decking Fixings

Lindapter

Type TR60



Sizes	CODE
M6	LTR60M06
M8	LTR60M08
M10	LTR60M10



Suitable for use with Structural Metal Decks (SMD®)

- TR60
- TR80
- TR60+
- TR80+

Lindapter

Type MW2 - Multi Wedge 2



Sizes	CODE
M6	LMWM06
M8	LMWM08
M10	LMWM10



Suitable for use with Kingspan® Structural Products

- Multideck® 60
- Multideck® 80

Lindapter

Type AW - Alpha Wedge



Sizes	CODE
M6	LAWM06
M8	LAWM08
M10	LAWM10

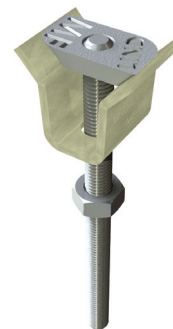


Suitable for use with Richard Lees® Steel Deckin Ribdeck® AL

- Ribdeck® E60
- Ribdeck® 80

Lindapter

Type MF - Met Floor



Sizes	CODE
M6	LMFM06
M8	LMFM08
M10	LMFM10

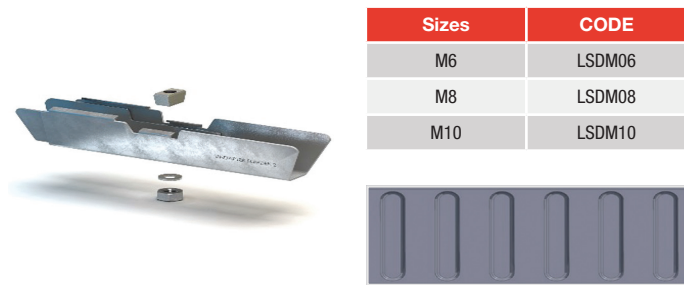


Suitable for use with Composite Metal Flooring (CMF®)

- MetFloor® 60
- MetFloor® 80

Lindapter: Decking Fixings

Lindapter Type SD - Slim Deck

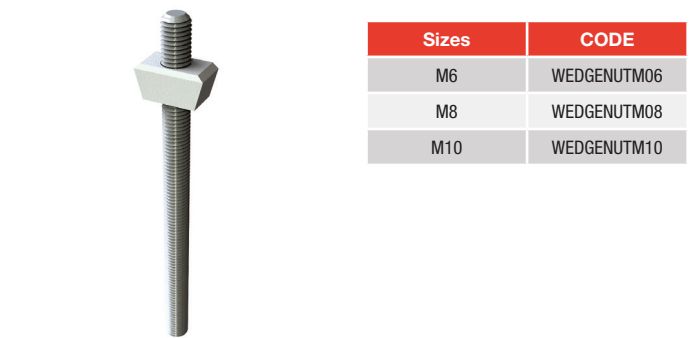


Sizes	CODE
M6	LSDM06
M8	LSDM08
M10	LSDM10

Suitable for use with EN Standard Steel Tube

- ComFlor® 225

Lindapter Type VN - V Nut



Sizes	CODE
M6	WEDGENUTM06
M8	WEDGENUTM08
M10	WEDGENUTM10

Suitable for use with:

- Structural Metal Decks (SMD®) Ribdeck® 51
- EN Standard Steel Tube
- Richard Lees® Steel Decking Holorib® and Superib®
- Kingspan® Structural Products
- Multideck® 50
- Metfloor® 55

Lindapter Type TC - Toggle Clamp

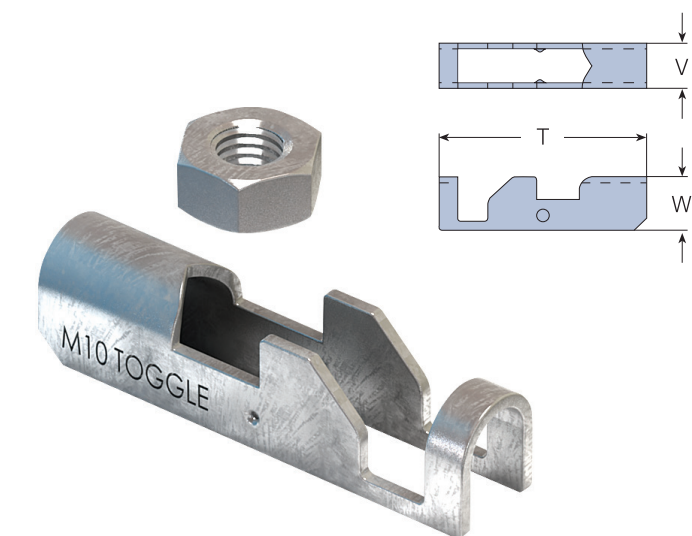


Suitable for use with:

- AMD 60 Decking Profiles
- AMD 80 Decking Profiles

CODE	Rod min 4.6	Safe Working Load (3:1 Factor of Safety) Tensile / 1 Rod kN	Tightening Torque Nm
AMD06	M6	1.0	10
AMD08	M8	1.0	10
AMD10	M10	1.0	10

Lindapter Type AMD

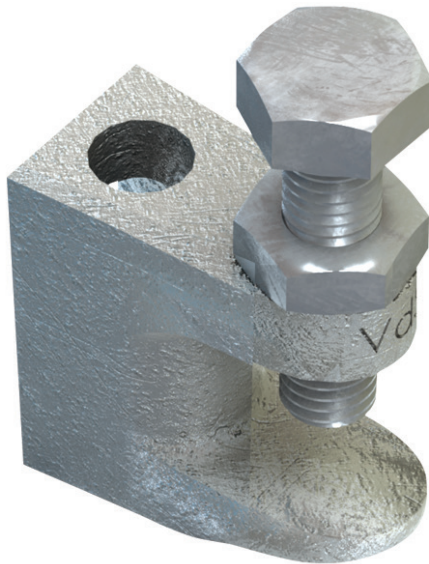


CODE	Rod min 8.8	Hole ø mm	Safe Working Load (4:1 Factor of Safety) Tensile / 1 Rod kN	Tightening Torque Nm	Dimensions		
					T mm	W mm	Width V mm
TC08	M8	22	2.45	10	68	16.5	13
TC10	M10	25	2.45	10	68	17.5	15

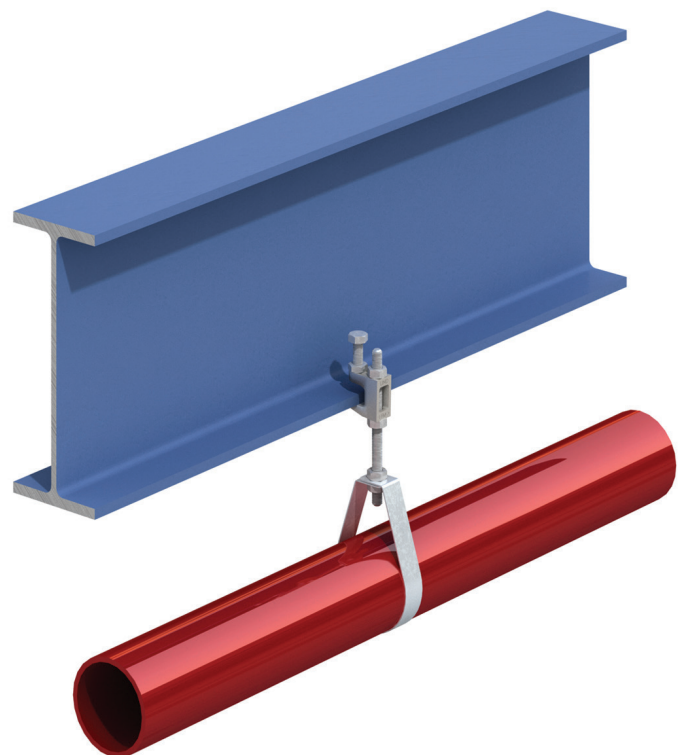
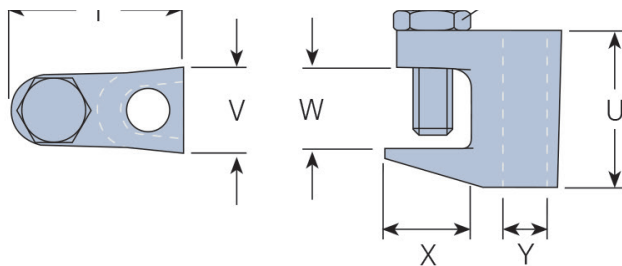
Lindapter: Support Fixings

Lindapter

Type FL - Flange Clamp



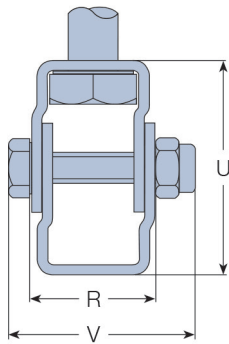
A flange clamp suitable for use with parallel or tapered flange beams, supplied with the rear hole drilled or tapped. The Type FL uses a hexagon head, high tensile cup point setscrew for secure grip. Can be used with Type SW - Swivel Unit when connecting to inclined sections.



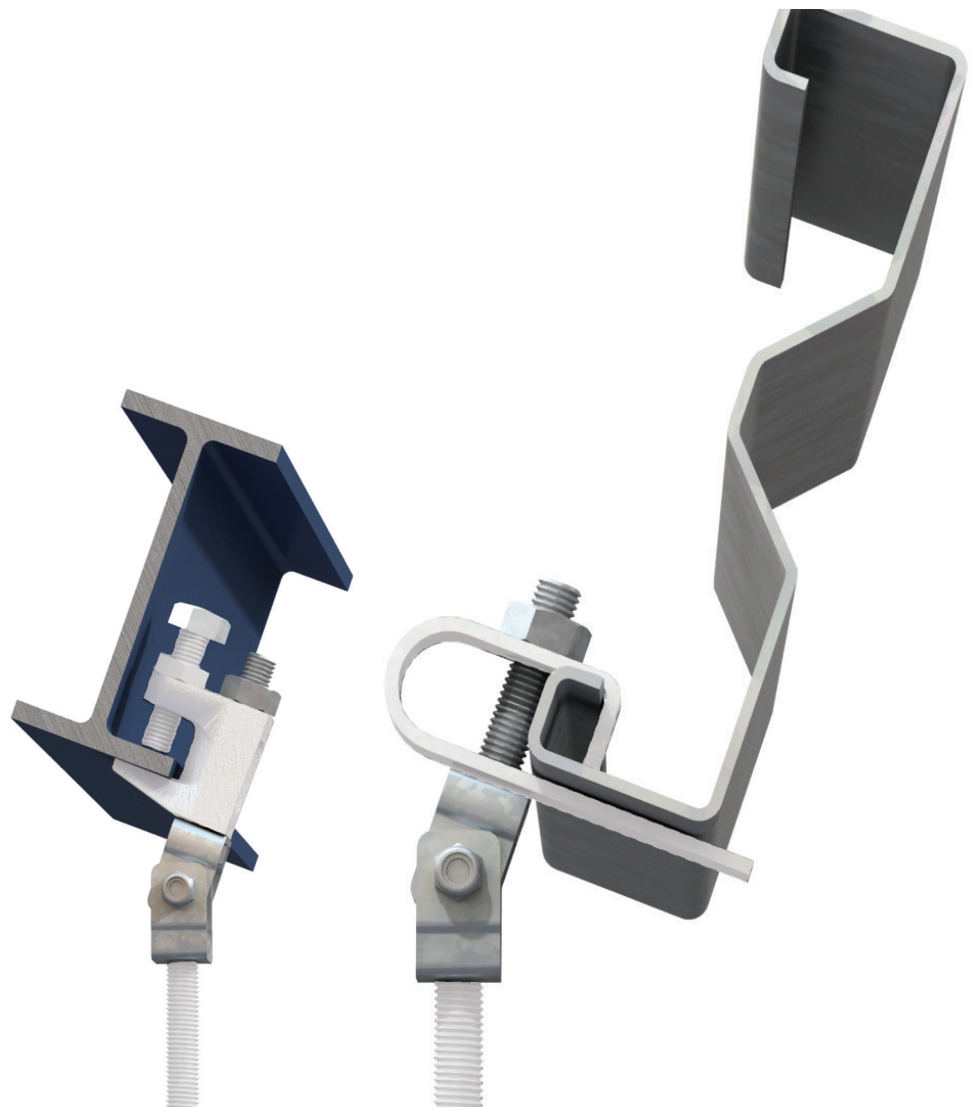
CODE		Safe Working Load				Tightening Torque			Dimensions			
Clear	Tapped	Clear Hole ϕ Y (mm)	Tapped Thread Y	(4:1 Factor of Safety) Tensile kN	Clamping Thickness W (mm)	Set-screw Z	Set-screw Z Nm	Lock-nut N Nm	T (mm)	U (mm)	X (mm)	Width V (mm)
FL106D	FL106T	7	M6	1.1	3 - 17	M8	8	11	36	35	20	19
FL108D	FL108T	9	M8	1.1	3 - 17	M8	8	11	36	35	20	19
FL210D	FL210T	11	M10	2.4	3 - 19	M10	8	22	45	40	22	22
FL312D	FL312T	13	M12	3.1	3 - 23	M10	8	22	50	46	28	25
FL412D	FL410T	13	M10	3.1	3 - 28	M10	8	22	53	51	27	26

Lindapter: Support Fixings

Lindapter Type SW - Swivel Unit



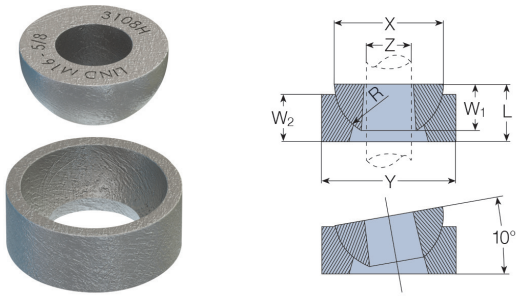
- Swivel unit for applications on inclined beams. Can be used with Type FL or Type Z10.
- Supplied complete with a Grade 8.8 M10 x 90 set screw and nut.



PRODUCT CODE	Rod	Safe Working Load (4:1 Factor of Safety) Tensile kN	Max Inclination	Rotation	Tightening Torque Nm	Dimensions		
						U (mm)	R (mm)	Width V (mm)
SW10	M10	2.4	18°	360°	11	45	25	35

Lindapter: Support Fixings

Lindapter Type HC / HW - Hemispherical Cup & Washer



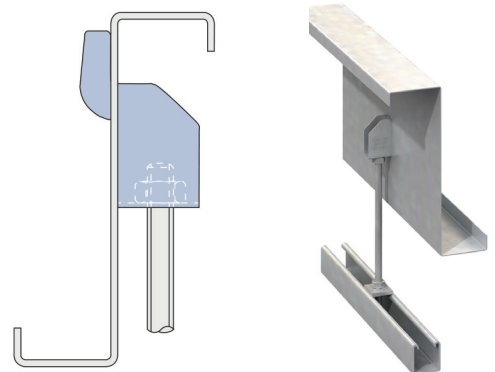
For vertical suspension on angled surface of up to 10° swing either side of the vertical. The hemispherical washer (HW) can be used without the cup. Loads are subject to applications.

CODE		ROD Z	Dimensions					
Hemispherical Washer	Hemispherical Cup		Hemispherical Washer		Hemispherical Cup		Hemispherical Washer & Cup	
			X mm	W ₁ mm	Y mm	W ₂ mm	R mm	L mm
HW08	-	M8	22	10	-	-	-	-
HW10	HC10	M10	25	12	32	12	13	14
HW12	HC12	M12	29	12	35	12	14	16
HW16	HC16	M16	34	16	41	16	17	19
HW20	HC20	M20	44	19	54	19	22	24
HW24	HC24	M24	57	25	67	25	29	32

Lindapter Type WF - Webfix



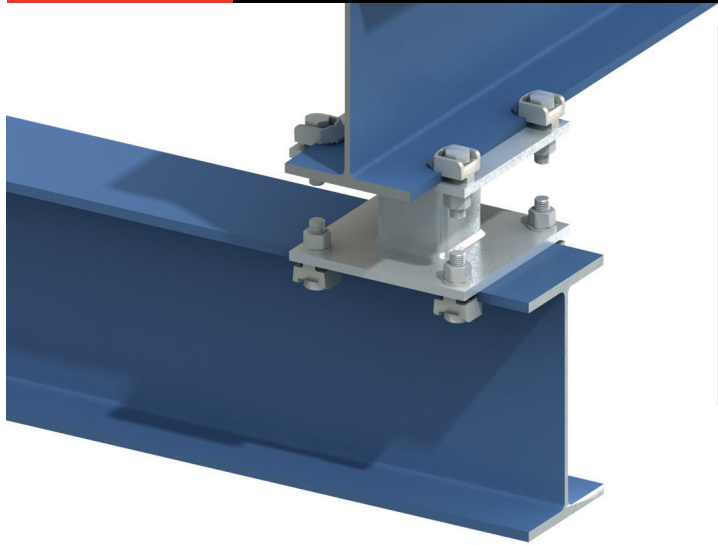
The Webfix - WF for a quick installation directly from the web of Zed purlins.



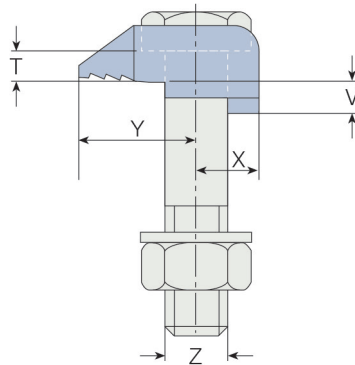
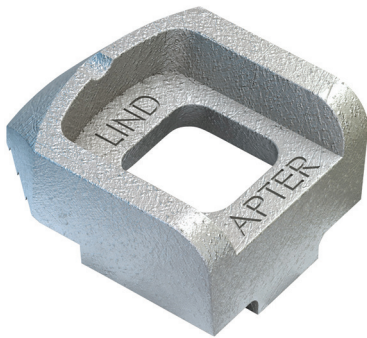
CODE	Rod	Safe Working Load (5:1 Factor of Safety) Tensile kN	Max. Purlin Thickness (mm)	Hole ø (mm)	Max. Distance X at Angle of		
					10° (mm)	20° (mm)	30° (mm)
WF10	M10	1.0	4	18	103	94	74

Lindapter: Steel Work Fixings

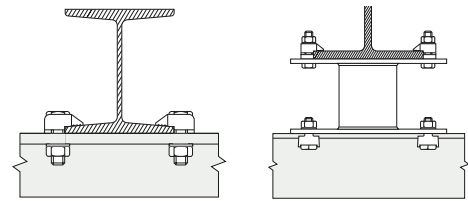
Lindapter Type A



The recessed top of the Type A clamp holds the bolt head captive while the nut is tightened. The skirt prevents the clamp rotating during installation. The clamp is suitable for parallel flanges and tapered flanges up to 8°. It is installed correctly when the clamping area grips the flange. The tail must be chosen to suit the thickness of the flange being gripped.



Typical Applications

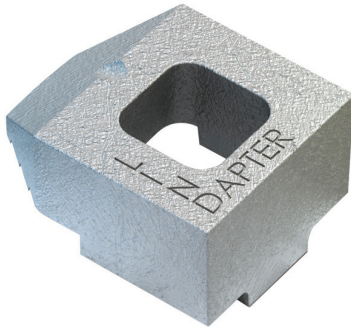


CODE	Bolt 8.8 Z	Safe Working Load (5.1 Factor of Safety)		Tightening Torque Nm	Dimensions						
		Tensile / 1 Bolt kN	Frictional / 2 Bolts kN		Y (mm)	X (mm)	Tail Length V			T (mm)	Width (mm)
							Short (mm)	Medium (mm)	Long (mm)		
A08	M8	1.0	-	6	16	8	-	4	-	4	20
A10	M10	1.5	-	20	20	11	4	5	7	5	26
A12	M12	5.8	0.7	69	26	13	4.5	6	9.5	6	29
A16	M16	7.3	1.5	147	30	16	5.5	8	11	8	36
A20	M20	14.7	3	385	36	19	7	10	12.5	10	46
A24	M24	19.7	4.5	491	48	25	9	12	16	12	55

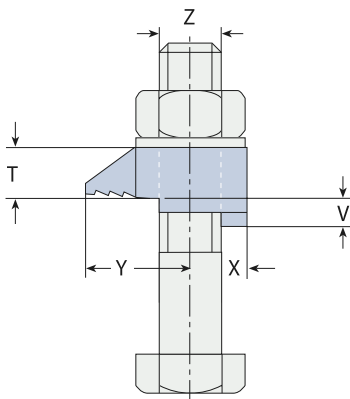
Lindapter: Steel Work Fixings

Lindapter

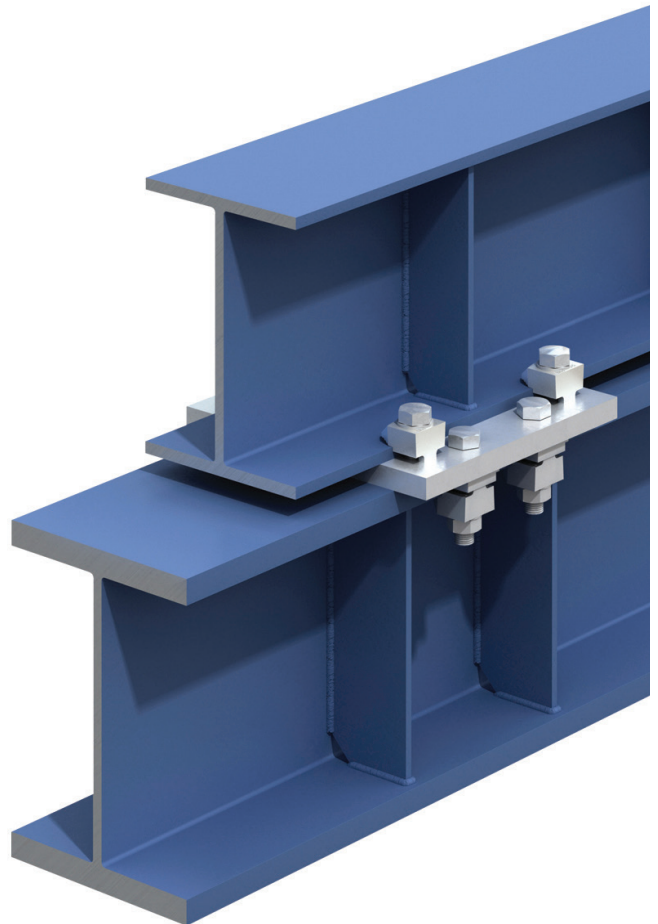
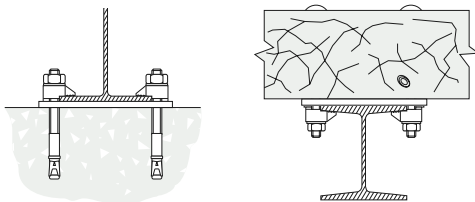
Type B



The flat top of the Type B clamp allows the bolt head or nut to be rotated. The clamp is suitable for use with bolts, studs, tie rods, J-bolts, parallel flanges and tapered flanges up to 8°. The clamp is installed correctly when the clamping area grips the flange. The tail must be chosen to suit the thickness of the flange being gripped.



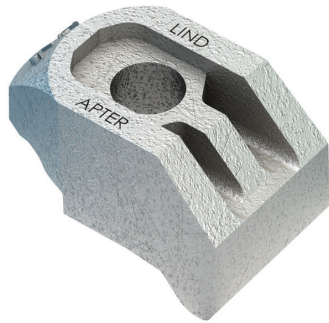
Typical Applications



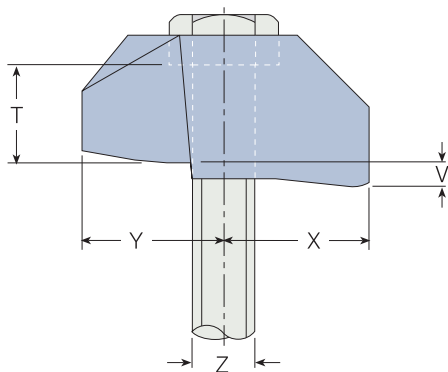
CODE	Bolt 8.8 Z	Safe Working Load (5.1 Factor of Safety)		Tightening Torque Nm	Dimensions						
		Tensile / 1 Bolt kN	Frictional / 2 Bolts kN		Y (mm)	X (mm)	Tail Length V			T (mm)	Width (mm)
							Short (mm)	Medium (mm)	Long (mm)		
B08	M8	1.0	-	6	16	8	-	4	-	8	20
B10	M10	1.5	-	20	20	11	4	5	7	10	26
B12	M12	5.8	0.7	69	26	13	4.5	6	9.5	12	29
B16	M16	7.3	1.5	147	30	16	5.5	8	11	16	36
B20	M20	14.7	3	285	36	19	7	10	12.5	20	46
B24	M24	19.7	4.5	491	48	25	9	12	16	24	55

Lindapter: Steel Work Fixings Type AF

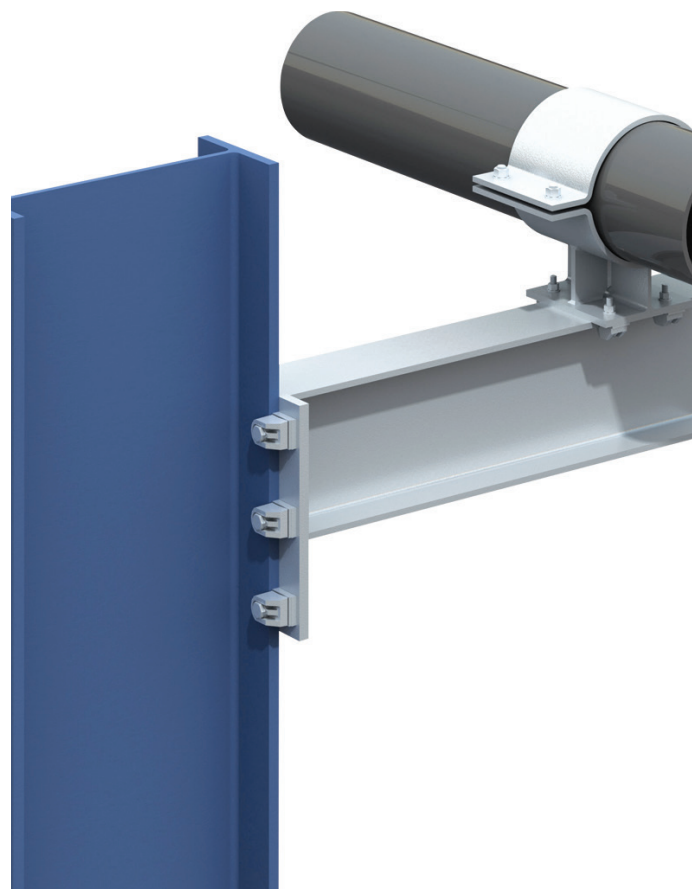
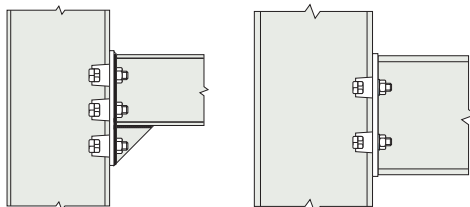
Lindapter **Type AF - High Friction Clamp**



A High Slip Resistance (HSR) clamp with a recessed top to hold the bolt head captive while the nut is tightened. Washer Type AFW available. The skirt prevents the clamp rotating during installation. The tail of the AF spans across slotted holes. Suitable for flanges up to 10°, ideal for S-beams. The clamp can be combined with Type CF.



Typical Applications

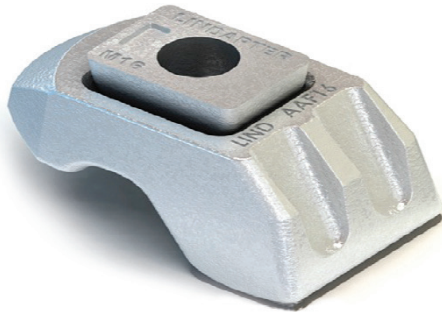


CODE	Bolt		Safe Working Load Factor of Safety			Tightening Torque Nm	Dimensions						
	Z	Grade	(5.1) Tensile / 1 Bolt kN	(2.1) Frictional / 2 Bolts			Y (mm)	X (mm)	Tail Length V		Tail Length T		Width (mm)
				Painted Steelwork kN	Galv. Steelwork kN				Short (mm)	Medium (mm)	Type AF	Type AF with AFW	
AF12	M12	8.8	8.5	3.4	3.9	90	27	27	5	12.5	17	22	39
AF16	M16	8.8	16.0	8.0	10.0	240	35	37	8	15	22	27	49
AF20	M20	8.8	26.3	13.0	16.0	470	40	39	10	18	25	31	56
AF24	M24	8.8	40	24.0	30.0	800	48	60	15	30	32	42	82

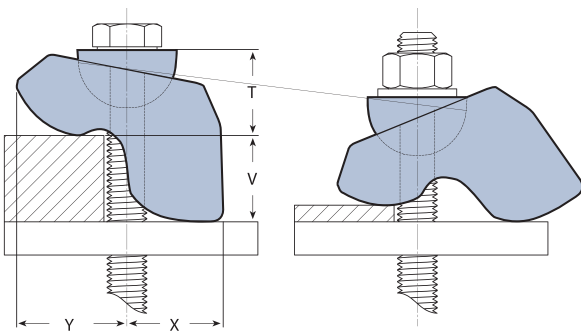
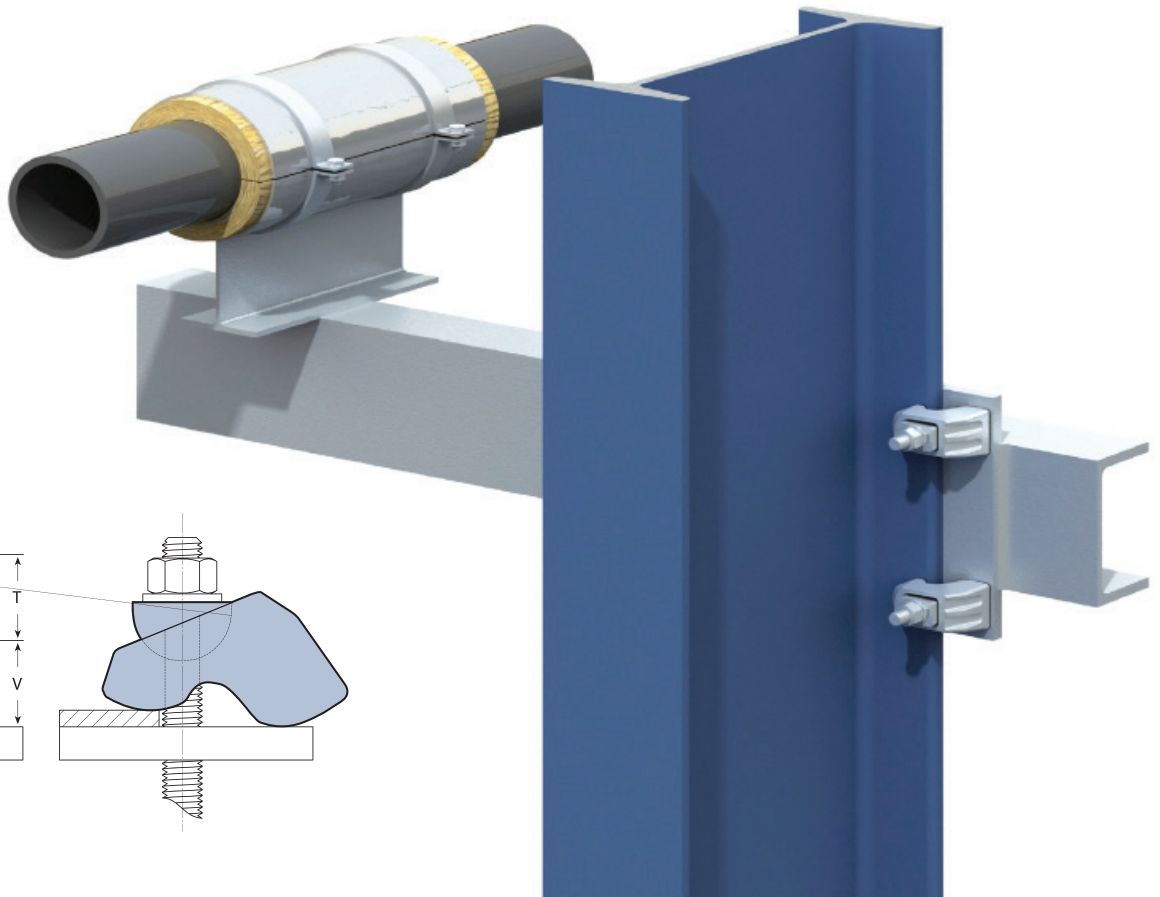
Lindapter: Steel Work Fixings | TYPE AAF

Lindapter

Type AAF



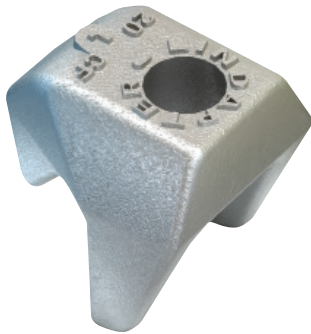
Lindapter's flagship product features an innovative 2-part design that allows the clamp to self-adjust to suit a range of flange thicknesses, while the low temperature SG iron provides resistance in cold environments where impact strength is important. This 'Adjustable AF' is an enhanced version of Lindapter's Type AF product and maintains the same safe working load capacities, but is faster to install due to an impressive clamping range of 6-30mm (size M16).



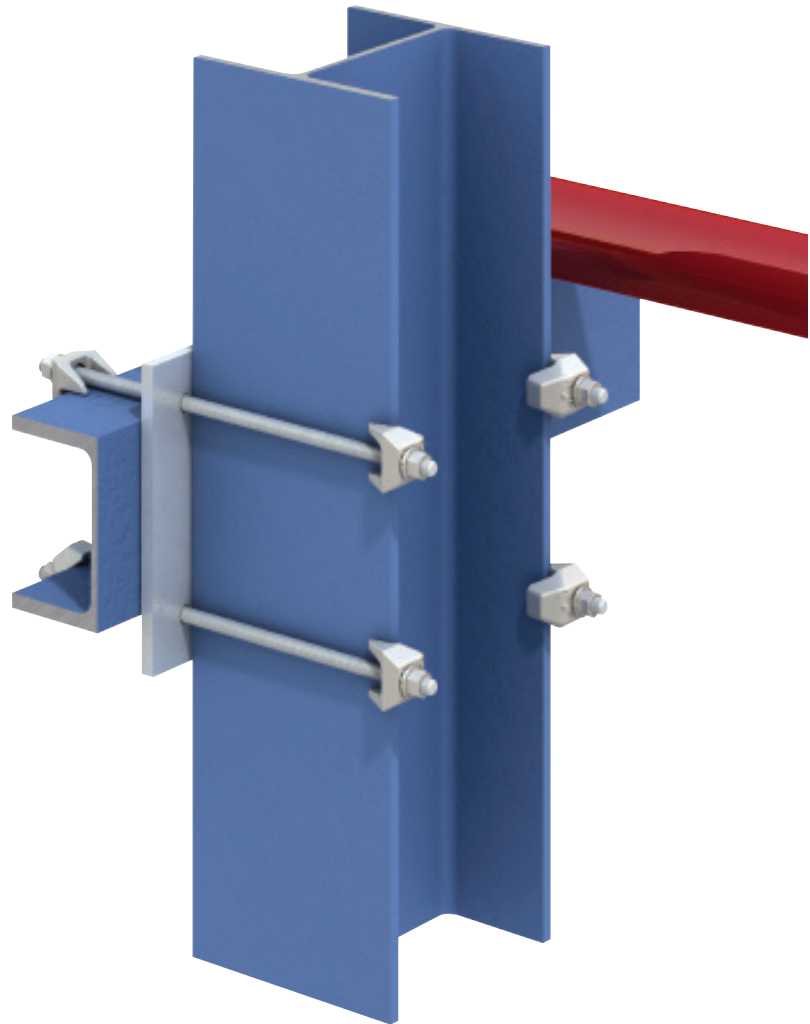
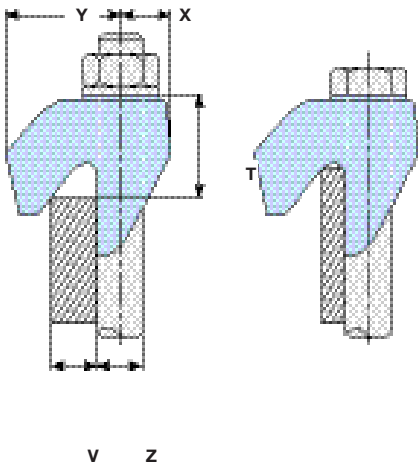
CODE	Bolt		Safe Working Load Factor of Safety			Tightening Torque Nm	Dimensions				
	Size	Property Class	Tensile Resistance / 1 Bolt (F.O.S 4.5:1) kN	Slip Resistance) / 2 Bolts (F.O.S 2:1)			V Clamping Range mm	Y (mm)	X (mm)	U (mm)	Width (mm)
				Painted Steelwork kN	Galv. Steelwork kN						
AFF12	M12	8.8	8.5	3.4	3.9	90	5 - 26	24 - 34	27 - 49	26 - 42	41
AAF16	M16	8.8	16.0	8.0	10.0	240	34 - 50	34 - 50	31 - 58	35 - 46	56
AAF12	M12	10.9	10.0	4.0	5.2	130 (100)	25 - 34	25 - 34	27 - 49	26 - 42	41
AAF16	M16	10.9	19.5	11.0	12.0	300 (250)	34 - 50	34 - 50	31 - 58	35 - 46	56

Lindapter: Steel Work Fixings | TYPE CF

Lindapter **Type CF**



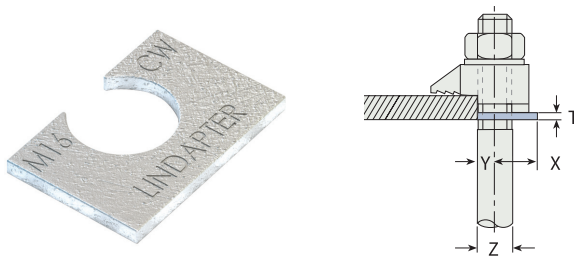
Hooks over the flange of beams, angles and channels to connect steel sections that do not face, such as connecting horizontal beams with vertical columns.



CODE	Bolt	Safe Working Load			Tightening Torque Nm	Dimensions				
		Tensile Resistance / 1 Bolt (F.O.S 5:1) kN	Slip Resistance / 2 Bolts (F.O.S 2:1)			V Clamping Range mm	Y (mm)	X (mm)	T (mm)	Width (mm)
			Painted Steelwork kN	Galv. Steelwork kN						
CF12	M12	8.5	3.4	3.9	90	6 - 13	32	14	21 - 29	46
CF212	M16	8.5	3.4	3.9	90	12 - 20	39	16	28 - 37	48
CF16	M12	16	8	10	240	8 - 16	44	18	25 - 33	56
CF216	M16	16	8	10	240	15 - 25	50	21	35 - 47	62
CF20	M20	26.3	13	16	470	10 - 19	53	22	30 - 41	65
CF220	M20	26.3	13	16	470	18 - 30	64	27	41 - 55	70

Lindapter: Accessories for types A & B & AF

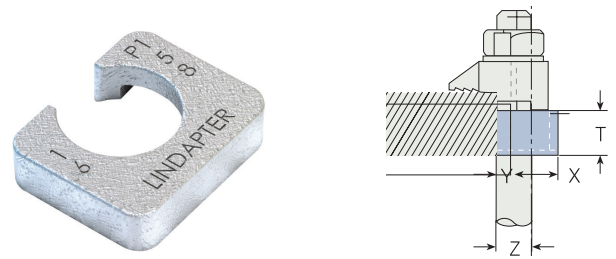
Lindapter CW Clipped Washer



A packing used to adjust the tail length of the clamp to meet differing beam flange thicknesses.

CODE	Bolt Z	Dimensions			
		Y (mm)	X (mm)	T (mm)	Width (mm)
CW08	M8	4	9.5	2	19
CW10	M10	5	14	2	25
CW12	M12	6	19.5	2.5	31
CW16	M16	8	17.5	3	38
CW20	M20	10	22	4	44
CW24	M24	12	29	4	57

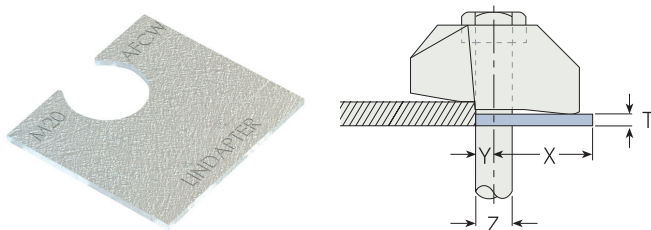
Lindapter P1 & P2 Packing Shims



A packing used to adjust the tail length of the clamp to meet differing beam flange thicknesses.

CODE		Bolt Z	Dimensions				
(P1)	(P2)		Y (mm)	X (mm)	(P1) T (mm)	(P2) T (mm)	Width (mm)
P1S08	P2S08	M8	4	10	4	8	21
P1S10	P2S10	M10	5	13	5	10	24
P1S12	P2S32	M12	6	16	6	12	30
P1S16	P2S16	M16	8	21	8	16	35
P1S20	P2S20	M20	10	23	10	20	43
P1S24	P2S24	M24	12	32	12	24	54

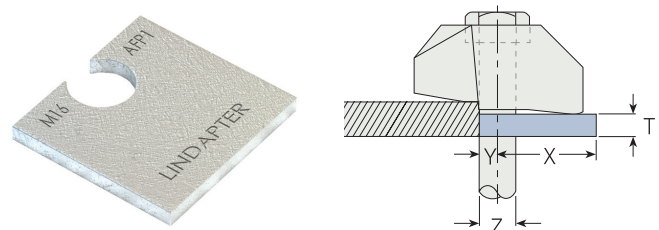
Lindapter AF Packing Shims



A packing used to adjust the tail length of the clamp to meet differing beam flange thicknesses; it has a slight bend along its centre line which flattens out during installation.

CODE	Bolt Z	Dimensions			
		Y (mm)	X (mm)	T (mm)	Width (mm)
AF12CW	M12	6	33	2	40
AF16CW	M16	8	40	2	50
AF20CW	M20	10	40.5	2	55

Lindapter AFP1 & AFP2 Packing Shims



A packing used to adjust the tail length of the clamp to meet differing beam flange thicknesses.

CODE		Bolt Z	Dimensions				
P1	P2		Y (mm)	X (mm)	(P1) T (mm)	(P2) T (mm)	Width (mm)
AF12P1	AF12P2	M12	6	33	5	10	40
AF16P1	AF16P2	M16	8	42	5	10	52
AF20P1	AF20P2	M20	10	45.5	5	10	56
AF24P1	AF24P2	M24	12	73	5	10	85

Lindapter: Other Lindapter products available upon request

Lindapter

HB Hollo-Bolt



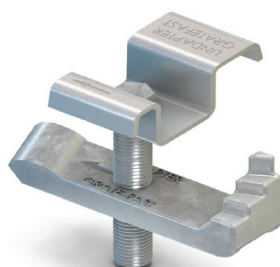
Lindapter

FLS



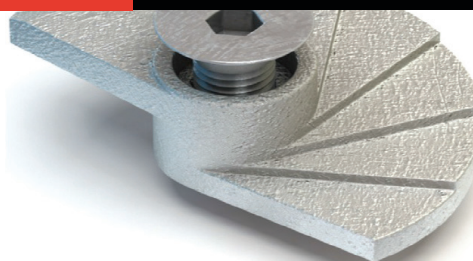
Lindapter

GF Gratefast



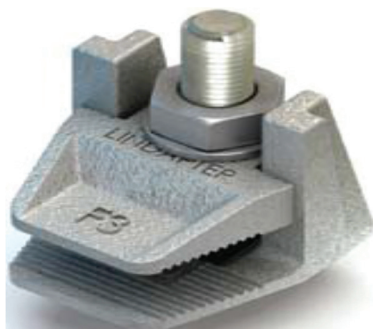
Lindapter

FF Floorfast



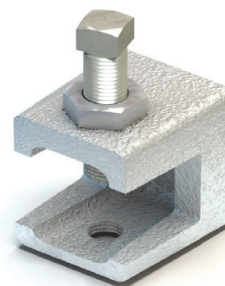
Lindapter

F3 Flange Clamp



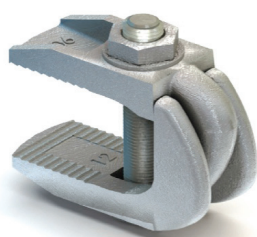
Lindapter

LC Clamp



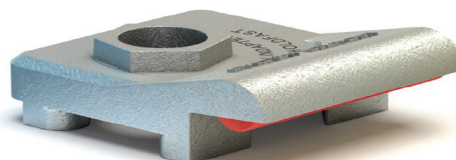
Lindapter

F9 Flange Clamp



Lindapter

HD Spring Clip



www.shawston.co.uk

Shawston London
Units G & H,
Hillbottom Road,
Sands Industrial Estate,
High Wycombe,
Bucks HP12 4HS

Tel: 01494 460 910
Email: London@shawston.co.uk

Shawston Birmingham
Bay 1, Block D,
The Bescot Estate,
Woden Road West, Wednesbury
West Midlands WS10 7SG

Tel: 0121 556 3400
Email: Birmingham@shawston.co.uk

Shawston Manchester
Great Norbury Street,
Hyde,
Cheshire SK14 1BW

Tel: 0161 368 4545
Email: Manchester@shawston.co.uk

Shawston Glasgow
Block 1 Unit 4,
Annick Industrial Estate,
31 Sandilands Street,
Shettleston,
Glasgow G32 0HT

Tel: 0141 778 6975
Email: Glasgow@shawston.co.uk
